



Rusty Parka News



Vol. 49 Issue 2 www.nspcentral.org **Winter 2011**

Division Director's Report



Jim Woodrum
Division Director

As we are well into the ski season, I hope those that are working to improve their skills are making the kind of progress that helps you to be successful in your journey. We had very good STW's at the beginning of the season to help many in their journey and introduced our new Accredited Senior Evaluators Clinic and Exam. This process is designed to continually drive consistency in all regions between evaluators so that candidates are fairly evaluated in their pursuit in their senior journey. We had many successfully complete all aspects of the exam and introduced many others to the process. This sets up the process for trainers and candidates to be on the same page and minimize the inconsistency between local hill training and the exams.

For those that are working on their OEC skills, the exams are well into preparation and will be conducted using all the materials in the 4th edition book. Next year the fall refresher and all

exams will be based on the new OEC 5th edition.

The new 5th edition OEC books will be available after April 27th. The cost will be about \$65 and will include the work book that used to be purchased separately. It will be one of the biggest and most

complete endeavors by the NSP with many of us contributing by authoring the chapters, reviewing the chapters, or contributing in support materials. Of special note is the leadership by Deb Endly, National OEC Program Asst. Director, Karen Hadden and Kathy Glynn, CD OEC Supervisors, Dr. Stephen Werner, CD Medical Supervisor and Kevin McQuillan, CD Legal Advisor. We will all benefit from their insight and contributions to the new book.

A significant outcome of the National meetings is the National Immunity legislations being prepared by Morgan Armstrong, Southern Division Director. This bill is to provide immunity when performing duties on the hill or rendering aid when off duty. To help with this bill we need contacts with staffers, legislators, or senator or house aides. If you have a personal contact with your representatives it will help in the process to get this bill through the house and the senate. Please drop me a line with any contact

Parka Picks

ADD What Goes Around	Pg. 2
ADD Thanks to All	Pg. 3
Toboggan Stuff	Pg. 3
Standards	Pg. 5
STW Updates	Pg. 7
Alpine Valley Rescue	Pg. 8
MTR and Pat 101	Pg. 9
OEC 5th Edition	Pg. 11
Thoughts on History	Pg. 12
Hall of Fame 2010 Class	Pg. 14
Region Reports	Pg. 15
American at World Cup	Pg. 17
Calendar	Pg. 23

information you may have to be forwarded to Morgan as he develops the approach to move this legislation forward.

I will continue to work throughout the division with visits and event activities the rest of the season. I hope that we have an opportunity to make a few turns together and discuss whatever may be on your minds.

Kasten's Korner



Copyright 2011 Gary Kasten

What Goes Around, Comes Around



Linda Murphy Jacobs
ADD

I had the opportunity during January to teach at the Northern Michigan Region candidate clinic that was held at Schuss Mountain. The day was crisp (started at minus 8), but clear, with little wind. They had gotten a 12 inch dump of light fluff the day before, so conditions were fantastic.

We were assigned our groups, and given a few minutes to chat before heading out. We were given a group with two candidates who were in their young forties, and two teenagers (a fifteen and a sixteen year old.) After introducing ourselves and giving a brief bio, I realized that one of my teenagers was the daughter of a patroller that I had helped mentor when he was sixteen! Needless to say, I embarrassed the poor lass in front of the group by making mention of that. The rest of the day was an eye opening exploration of skiing and tobogganing.

I was a bit worried that all of the information would overwhelm the two younger members of our group, but that was not the case. Both young students stepped up with enthusiasm and youthful curiosity. The two candidates who were a bit more seasoned jumped in to help clarify and reinforce the information. Everyone rotated through all of the toboggan positions and the ski demos

in a respectful manner. My co-instructors blended into the flow to add suggestions and give appropriate demos. Needless to say, the hours of the day flew, and soon we found ourselves at the top of the hill for our last run. I took a few minutes to reflect on the journey that our two young patrollers were starting, and the journey that I have been on with this organization.

For forty years I have been given the opportunity to meet people all over the United States, and Europe, who share the same passion as I do. Helping injured skiers, improving my personal ski skills, teaching and being taught, all part of what I value as a patroller. Making deep and abiding friends who share the same loves. To see these kids at the beginning of their own journey, with all of the sponge-like enthusiasm to learn everything they can get their hands on was inspirational to me. I truly believe that I got more out of the clinic that day than they did.

I was reminded about the spirit that our members bring, and hopefully I will be able to mirror the same enthusiasm and open mindedness that they showed. Many thanks to all of the patrollers and candidates who continue to seek personal goals with open minds and hearts. You make my day.

Thanks to All



Dan Somalski
ADD

Many of you know I have taken ill this fall. Some of you have known I have been a “sick puppy” for years. What a shock! One minute I was giving out the “stuff”. The next minute I was looking eternity in the eye. I did my best to keep it quiet till a treatment plan was in place. I eventually had to explain to my co workers why I was missing so much work. When the word of my problem got out, the cards, calls, emails, and face book stuff started and continued. You never know how many friends you have till you get sick. Most of these contacts have been from patrollers.

As for me, I’m doing quite well; I’m through the first round of chemo. I got through it pretty well except for being tired. I am currently waiting for a new plan for round two. I have been patrolling ½ days at Nubs, and getting some skiing in.

I have been overwhelmed! You all have given me the strength and toughness to take on anything this disease can dish out. There is something about the patrol family I can’t describe that forms a bond that is very strong. I have felt this bond from day one. Thank you all for the support, good wishes, and prayers. With God’s help I will put this problem in my rear view mirror.

See ya on the white and slippery,

Dan Somalski

Toboggan Stuff

TOBOGGAN HANDLING SKILLS:



Tom Worley
Division Toboggan
Supervisor

Winter is finally here and your toboggan refreshers should all be complete. What are you doing to improve your toboggan handling skills? If you answer was “nothing” then let me suggest your involvement in a local Toboggan Enhancement Seminar (TES). Each area can and should host at least one of these events every season. If your area is not, ask you Patrol Representative why? He/She is capable of organizing just such an event with little or no effort. All that needs to be done is to contact your local Toboggan IT and ask for one to be conducted. If that person is not immediately apparent, then simply contact your Region Toboggan Supervisor/Advisor and he can make it happen. It’s that simple. These events can be conducted at any ski area at any level of toboggan handling skill. From first year candidates through Seniors, a TES is a wonderful way to help refresh, practice and improve your toboggan handling skills. Do it now, contact your Patrol Rep and get a TES at your area before the snow disappears.

INSIDE OR OUT, THAT IS THE QUESTION?

When do you handle the toboggan outside the handles? Only after you are trained “how to” is the answer, but more informative than that is when and why.

When a patroller is challenged to handle a toboggan in steep, heavily moguled terrain the question becomes relevant. Inside the handles is for the most part, the most efficient way to handle a loaded toboggan. However, when on a steep heavily moguled run inside the handles might not be the most versatile way to get your toboggan load of injured guest down safely. When you are faced with the challenge of taking a loaded toboggan down any hill, one of the principals is to keep the toboggan as flat as possible. Heavily moguled, steep terrain typically requires you to stay in the troughs as much as possible. Unfortunately, that typically requires extensive lateral movement of the handles to guide the toboggan. If you are in the handles your lateral movement is severely limited to less than a foot or so. After that you have to make radical sideslip movements. Often the troughs are too narrow for a 160 to 170 CM ski to navigate easily without either the tip or tail (or both) riding high on adjacent moguls.



That “radical sideslip” movement might be completely blocked by a near vertical mogul wall. In this case inside the handles might be putting the injured guest in potential peril. Outside the handles allow the patroller to laterally move the handles much more and in addition, the patroller is capable of bringing the toboggan down a narrow trough without being in that trough. This provides the patroller much more edge control whether on a board or skis. Typically, when a patroller is in such steep heavily moguled terrain, no tail rope person is involved. This is simply because the terrain is so varying that a tail patroller becomes a detriment to sustaining a smooth, continuous decent. When in the steep heavily moguled terrain, the toboggan must always be kept in the fall line and the chain brake deployed. The chain acts as the secondary brake that we typically have when a tail rope decent is utilized. The decent speed through the moguls is typically much slower but continuous. If you are interested in obtaining more information on “how to handle a toboggan outside the handles” contact your local Toboggan IT for some hands on training and experience. Don’t take a toboggan down ANY RUN outside the handles without proper handling instructions by one of the division Toboggan Pros, your local Toboggan IT.

TAIL ROPE TECHNIQUES:

How do we specifically recommend that you hold the tail rope while moving? The simple answer is we don’t. There are many ways to properly hold a tail rope. The method you use is somewhat up to you and or your local area protocol. What we will specifically define are the criteria defined in the Outdoor Emergency Transportation (OET) manual. That manual is our “bible” and lists several criteria. They are:

1. Both hands on the rope
2. Both hands in front of your body (between toboggan and patroller)
3. The downhill hand is the controlling hand
4. The rope is not to be secured to or wrapped around any portion of the body or extremities

There are lots of ways to hold that rope and still meet these criteria. If you are not sure what is the best way or the most efficient way to hold the tail rope while moving down the hill contact your local Toboggan IT. The Toboggan IT will gladly come to your area and work with you and your patrollers. Perhaps the most effective way to get the whole story about how to hold the tail rope and toboggan handling in general is to have your Patrol Representative arrange for a TES to be held at your area some time soon. If that sounds like it might be of interest have your Patrol Representative contact your local Toboggan IT or your Region Toboggan Supervisor for assistance.

The Division toboggan program is for all of you. Take advantage of our courses and the assistance of the toboggan IT’s at your area or in your Region.

Where Would We Be Without Standards?



Dan Moss
NSP-C PSIA Ski
School
Supervisor

Our applause goes up to all those who participated in our recent Division Ski Trainer Workshops! Wow, what a dynamic group of people. I went home thinking that our local resorts are in good hands!

Many PSIA credentialed Sr. Ski Evaluators participated in a the calibration clinic. Though it was early in the season for all of us, everyone without exception gave their all to the task at hand. We reviewed demonstration videos, discussed and tested ourselves on the Sr. Score card, skied

the
test,
stan-
our
were
Sr.
ment
and



terrain appropriate for a Sr. calibrated to the Sr. level dard, and then reviewed own skiing on video. They full days and I applaud your Evaluators for their commit- to us their fellow patrollers their respective regions.

Other STW participants program. Like anything that growing pains with it but it was filled with folks who our the quality of our pro- goes out to you as well. Sills Development Supervi- program, see his article.

took part in the new ASE is new there were some again, it was very clear that care a tremendous amount gram. ARPN pat on the back Don Loerch, our Division sor wrote more about that

Standards--Our out- with standards. We and boot purchases tion of their ability: be- advanced/expert. We

culty of a hill through a standard of symbols and colors . . . unfortunately marketing is often involved in those de- cisions. The PSIA credentials instructors based on written standards. The MSA uses standards for evaluat- ing resort effectiveness and popularity. Our equipment uses a standard for setting bindings and boot flex. And we monitor safety on the hill by way of the responsibility code, a standard of behavior . . . standards are all around us.

door snow sport is filled evaluate patrons for ski based on their evalua- ginner, intermediate or communicate the diffi-

Most of us have a fairly positive response to standards. In fact, where would we be without them? People would go down runs not appropriate to their skills, equipment would not have a gener- al setting, no one might care about speed or posted signs, etc. Simply, it would be mass chaos.

As ski /ride instructors, we deal with interpreting written standards a lot. Our efforts are toward helping others reach a particu- lar standard, written or not. Whether for Alpine, Sr. or Certified levels, we all work toward skiing/riding to a particular standard.

We want to encourage you to keep going, to never give up, and never waste a single run . . . give every run a fo- cus. The focus could be as simple as enjoyment, being one with the trees (don't take that literally) or fun. Or it could be as complex as reaching for the next written standard above where you are now. Work on a task to improve for 10-15 minutes at a time, then do some integration runs where you allow your mind to stop thinking and start ski- ing. Who knows, maybe you'll surprise yourself and some of your new task-work will creep into your skiing/riding.

The NSP-C Ski School is a resource that exists for you. The school works to carry out the charge to help patrollers within the Central Division reach these mutual goals and standards. Please con- tact your local NSP-C School Instructor or your NSP-C Ski School Advisor to assist you on your journey.

Division Training Scenes 2011



Region PSIA Ski School Liasons

North Central	Bob Meyers	rjmmqt@charter.net	(906) 226-8578	(906) 485-2419
Northern Michigan	Michael Leach	mrleach@umich.edu	(734) 417-5944	(734) 417-5944
Eastern Michigan	Catalin Barbu	catabar@yahoo.com	(248) 813-0020	(248) 703-6570
Western Michigan	Kevin Fultz	kevinfultz@aol.com	(269) 321-9193	(269) 660-7596
Ohio	Amy Arnold	luciawave@mac.com	(419) 774-9566	(419) 524-6249
South Central	Timothy Weinand	tweinand@aosmith.com	(414) 791-0989	(414) 791-0989
Southern	Natalie Faes	natalie.faes@kraft.com	(312) 953-4117	(847) 646-2362
Western	Jim & Cindy McLeod	cjmcLeod@d.umn.edu	(218) 721-4960	(218) 721-4960

What Month is This?



Don Loerch
Division
Skills Development
Supervisor

Off we go into another great season of patrolling, training and testing...

While many of our brothers and sisters were waiting for their respective hills to open, a good deal of early season preparation was underway with the Skills Development Team. Over the summer and into the fall, a small cadre of our team spent a good deal of time developing a new program and pathway for senior evaluators. Working under the guidance of our Board of Directors (BOD) the Accredited Senior Evaluator (ASE) program was born, read on for more on this. Blessed with permission from our respective spouses, I'm also happy to report that on Nov 27th, twelve fellow patrollers found ourselves participating in a week long 'Focused Learning' clinic at Vail. The major benefits to our group and those we interact with has been a deeper understanding of how people learn while gaining a few new tools to aid our teaching efforts. Without a doubt, I'd recommend this adventure to anyone interested. The good people at Vail are looking forward to future clinics with interested NSP members. Be sure to contact either Darcy Hanley (National Education Director) or me if you'd like to learn more about participating in this program.

What happened to December...? It was a blurrrrrr but, we can report the Division Alpine Clinics were once again well attended. Our visits to Trollhaugen (WI) December 4th & 5th, Boyne Highlands (MI) December 11th & 12th and Cascade Mountain (WI) December 18th & 19th proved to be a great opportunity, as always, to meet and commune with fellow trainers, evaluators and patrollers. Thanks to all who attended and to our staff for taking valuable time away from their families during the holiday season. In all, 215 individuals registered, once again giving us a wonderful chance to spend a few weekends with new and old friends. Sessions included a variety of training opportunities including, Toboggan IT recertification, Toboggan Instructor refreshers, SES's, Senior Alpine Evaluator Calibrations and the roll out of our new Accredited Senior Evaluator program. If you missed attending this last series, please mark your calendar for next fall, on-line registration will open in October via our division web site.



Central Division Instructors receive dynamic lessons from Tom Anderson and Jay Zedak at Cascade Mountain in December.

As we look forward to another active season on the snow, I'd encourage all of our members to talk to their local and region training staffs about the recent changes afoot in how we train and test. Earlier

in this piece I mentioned two important efforts underway regarding the Senior Alpine Program. Specifically, we will all see changes over the next several years in the make-up and skill consistency of our Senior Skiing Evaluation teams. Last fall, our BOD took several bold steps to assure consistency, division wide, of senior alpine skiing evaluations. The initiatives included the roll out of our new ASE program and a concentrated effort to calibrate existing Senior Evaluators with PSIA/AASI credentials. For those unfamiliar with the new ASE program, we'd like you to know it has been established to provide an alternate path to becoming a Senior Evaluator without pursuing PSIA/AASI credentials. This new ASE credential can be obtained in part by availing yourself of the study materials on the division website and eventually attending a scheduled exam. Secondly, we now also require Senior Skiing Evaluators with PSIA/AASI credentials to attend a division calibration clinic prior to participating as an evaluator this season. Thanks to our BOD's initiative, new measures have been established to assure our Senior Candidates will receive consistent training and testing division wide. Looking forward, all Region Senior Alpine Skiing Evaluators must now show they have the skills needed to demonstrate and validate what is expected of Senior Candidates. As a result, when you attend local and region training/testing events over the next several seasons we anticipate you will start to notice a more unified, skills based approach to the Senior Skiing programs. More information on these programs is available through your region proficiency team or by contacting one of our Skills Development team directly.

Keep up the good work out there, I wish all of you a safe and enjoyable season.

Ski Patrol Gets High Marks for Alpine Valley Rescue

Speciall to RPN from WKYC.com

CHESTER TOWNSHIP -- Volunteers of Alpine Valley's Ski Patrol are getting high marks for the way they handled Saturday's incident in which 85 people were stranded on a stuck ski lift for as long as three hours.

"They did an outstanding job. They were prepared and they were very, very well organized."

That's what Munson Fire Chief Bernie Harchar had to say about Alpine Valley's Ski Patrol, an organization of about 50 volunteers who were first to respond to Saturday's situation.



"They train for that kind of work all the time," Chief Harchar tells WKYC. His fire department was one of about six that responded to Alpine Valley and worked together with the Ski Patrol and the Ski School to conduct the 3-hour rescue operation.

About four Ski Patrol members were on duty Saturday afternoon when a gear malfunctioned in Alpine Valley's main ski lift, leaving 85 skiers dangling as much as 30 feet above the snow.

About 15 other members of the Ski Patrol were summoned and went right to work.

"This is the first time we've ever had a big ski lift evac," says Brian Monroe, veteran member of the Ski Patrol. "A few times in the past we had some issues where we had to use the evacuation equipment to get people off, but never something this big."

A special gun, powered by a 22 caliber shell, launched rescue ropes across the ski lift cables. Each skier then had to scoot onto a bosun's chair and wait for rescuers to lower them to the ground.

While others waited to be rescued, volunteers tossed woolen blankets up to each, along with hand warmers, as the temperature was 28 degrees and the wind was beginning to pick up.

"The job that was done out there was phenomenal, especially by our Ski Patrol and our Ski School," says Alpine Valley area general manager George Shaffer. "We were doing everything we could to make those people as comfortable

as we could."

Shaffer says replacement parts have been ordered from Canada and are expected to arrive by Wednesday. His projection is that repairs should be completed no later than this coming weekend. As many as 24,000 skiers patronize Alpine Valley during peak weekends.

© 2011 WKYC-TV

Hard to Believe, but Let's be Prepared



John Wachter
Division MTR
Supervisor

Hard to believe how fast this season has gone by. As I look back there was an article in the winter 2010 NSP magazine that I wanted to emphasize. Here is a section from it:

"Combined Forces

In the years since 9/11, more patrols are requiring FEMA incident command training.

By : April Darrow

In October 2009, three hikers became lost in California's Sequoia National Park after an unprecedented snowstorm dumped up to six feet on parts of the region. An incident command center to locate the hikers was established in the park, but a search team specializing in snow travel was required, calling for training outside the realm of the national park system. The Southern California half of a Nordic search team comprised of Far West Division patrollers was summoned. The group was qualified; all members had completed the Federal Emergency Management Agency (FEMA) National Incident Management (NIMS) course and had the training required by the Federal government for such a scenario."

These courses are free and will take 2-3 hours each to complete on line. No additional study is needed, just follow the only line study guide and take a few notes. These courses cover the operation and structure of the incident command and show how agencies work together. For more information on NIMS or ICS training, or a complete Course list, access fema.gov/emergency/nims.

On March 26 at 9:00 we will be holding an MTR I / instructor enhancement course at Blue Mounds State Park in Wis. This course will cover low angle rescue, map and compass along with the how to stay comfortable in the great outdoors. You will have the opportunity to camp out if you like on Saturday. If interested please feel free to contact me at rock_ski@hotmail.com.

Have a great season and I hope to see a few of you up at the Birkebeiner.

Intro to Patrolling: Patroller 101



Jeannine Mogan
Division
Patroller 101
Supervisor

Its 3 degrees below zero this morning in Bloomington, Minnesota. The sun is shining and slopes are perfectly groomed. The reading on the thermometer is not going to bother me. Is that because I'm a "Hearty Minnesotan"? No, it's because I know how to dress appropriately for the weather. You should not assume that your candidates automatically know this or know how to educate the skiing and snowboarding public about this topic. During your Introduction to Patrolling training, you should cover the basic concepts of Adapting to the Outdoor Environment. Topics include:

- How the body produces and loses heat
- Layering of clothing and clothing materials
- Dressing for the weather, climate, activity, and time of exposure
- Foot wear
- Helmets

- Patrol Uniforms

Introduction to Patrolling Modules

- Risk Management
- Adapting to the Outdoor Environment
- Toboggan Handling
- Scene Management / Incident Command System
- Rope and Belay Skills
- The National Ski Patrol, Ski Area Management, and the Role of the Volunteer Patroller.
- Guest Services

Spotlight on: Adapting to the Outdoor Environment

This module teaches new patrollers how to be prepared for given weather conditions and activities.

Educational activities that can be used to help new patrollers master this module include:

- Helmet safety video from the Central division web site. <http://www.nspcentral.org/media.php>
- Patrol Uniform Fashion Show: Have seasoned patrollers show off the different varieties of uniforms used at your area and explain what they like about each.
- Role play: create a scenario in which a guest is not dressed appropriately. Candidates role play how they will educate the guest about dressing appropriately.
- Outdoor Clothing Fashion Show: Candidates bring in appropriate clothing for a given weather condition and demonstrate/discuss the features, materials, venting, etc.

Resources for this module include:

- Mountain Travel and Rescue manual
- OEC manual (4th edition) Chapter 2. The 5th Edition will have updated information!
- OEC Instructor's manual
- Introduction to Ski Patrolling Manual (found on the Central Division web site)
- http://www.ehow.com/how_2307312_dress-cold-weather.html

Upcoming "Adapting to the Outdoor Environment" educational opportunity

Check with your region Mountain Travel and Rescue advisor and Nordic advisor.

Stay warm out there!!

Questions/comments – Email Jeannine Mogan jmogan@threeiversparkdistrict.org

FREE SKI VACATION AT MOUNT BOHEMIA



Mount Bohemia located in Upper Michigan features:

- *The Midwest's highest vertical*
- *Deepest powder*
- *And most adventure!*



Patrol at Mount Bohemia Monday-Friday during the season and we will pay for your lodging, give you \$50 a day per diem and give immediate family up to four members free skiing!

All you have to do is commit to guest patrolling with our patrol during this time period.

Mount Bohemia guest patrol would be required to patrol Monday—Friday; 10:30am-4:30pm.

Advanced reservations are required please call now!

*Please call:
Lindsey
231-420-5405*

Updates: 5th Edition and Quality Assurance



Karen Hadden
Division OEC
Supervisor

Good news from Brady. They are 100% sure they will meet the April 27 deadline. They are trying to get this approximate 1250 page book in the hands of our ROAs, ITs and Instructors a couple of weeks before April 27th.

Retail cost of the book will be \$89.00

Patroller Cost

- First year the book is on the market will be 25% off the retail cost= \$65.60
- Second year the book is on the market it will be \$70 for registered members and instructors will still be \$65.60.
- The E-Book is \$44.00; however it is not an entire book download, but rather a page at a time (1250 pages).



All OEC classes using the 4th edition must be completed by May 1, 2010. That is the final date the test bank and materials will support the 4th edition. No certification will be given from the National Office beginning on May 2nd for 4th edition classes. A new class using the 5th edition will need to begin to attain certification. We were told there are no exceptions. We encourage you to hold off on new OEC classes until the 5th edition is out. If you must, and you can complete an OEC course between now and May 1, 2010 you may register the class, however as of today you only have 15 weeks to complete the course and it is the middle of our ski season! Something to consider, some candidates could be put in the position of purchasing a 4th edition text, paying the course registration fee then within a few short months purchasing the 5th edition. This has the potential of being a big burden on our new patrollers.

Our 5th edition will meet the needs of the patroller and other outdoor emergency care professionals in the ever changing field of emergency medicine using evidence based medicine. It will promote quality assurance via medical leadership from National to the patrol level. Quality assurance is the best method to insure treatments rendered by patrollers meets or exceeds the national standards for emergency personnel. In the near future we will be working closely with our Division Medical Advisor, Dr. Steve Werner, as well as other medical personnel throughout the Region, Section and Patrols to validate the quality care we deliver to our patients. We will continue to update you as we move toward developing and working within the NSP Quality Assurance program.



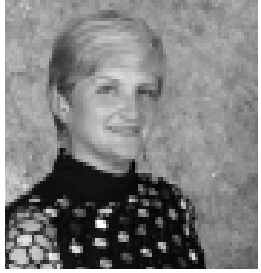
Jay Zedak
Division Senior
Supervisor

Alpine Senior Evaluation Dates 2011

Region	Date	QA
Eastern Michigan	Feb 12 Boyne Mtn	Linda Murphy
South Central	Feb 19 Tyrol Basin	Chuck Martschinke
Ohio	Feb 27 Boston Mills	Chip Knappen
Northern Michigan	Feb 27 Boyne Mtn	John McGoff
Southern	Feb 26 Chestnut	Eric Gesteland
Western	Feb 27 Giants Ridge	Jim Woodrum
Western Michigan	Feb 27 Crystal	Jay Zedak
North Central	Feb 13 Marquette	Jim Woodrum

The Alpine Senior Exams are scheduled, and patrollers across the Central Division are sharpening up more than just their edges in preparation for these events.

You Too Can Join in the Fun!



Virginia Rodeman
Division Instructor Development

Have you ever watched bees in the late summer and early fall? They are working hard to get that last nectar to the hive before the frost. Have you watched the OEC Instructors lately? August, September, and October are three months that they are equally as busy as bees. I think there is a high correlation to “get it done” before the cold sets in. Once they have finished and winter does set in, it is time for the toboggan instructors and snow sports instructors do start their activities. Did you ever consider helping or joining in with either group?

Instructor Development Classes are the first step. In these you will learn the components of the six pack as well as how to provide feedback---just to name a few of the course components. After this class you'll be assisted by an experienced instructor to help guide your way. Then when you are ready, you will demonstrate your methods. It doesn't have to be a long process. Everyone is welcome. Take an Instructor Development class. Perhaps, though, the Instructor Development classes in your region are over until spring.

Thoughts on History

By: Mark Gottwald
Western Region Patroller

While I am writing this I am on a trip in the east. I've had the chance to walk the Freedom Trail in Boston and spend some time in the old section of Quebec City and have enjoyed it immensely. I also drove to the top of Mt. Washington in the White Mountains in New Hampshire, toured through the Green Mountains and spent a night at Lake Placid. After the mid October Nor'easter there is snow on top of the mountains and it looks great to me. So you may be asking what does that have to do with the ski season?



There is so much history of skiing out in these mountains that you almost take it for granted. While driving I notice there are a lot of areas that you can still pick out on the hillsides, but the areas are no longer open. If you look, the chair lines are still there but filling in with trees. We can see this as well in the Western Region. Telemark, Sugar Hills, Birch Hill, and Frontenac are all history.

As patrollers we can have an effect on the viability of our home areas. We refresh every fall for OEC, lift evac and transportation. This year what we need to do is refresh our enthusiasm for skiing and toward the people doing it – especially the beginners.

The reality is the skiing public is aging. There are not as many recruits (beginners) as retirees. Young people have many other options for recreation; skiing can be a hard sell. Studies show that if a person skis or boards 3 or 4 times they could be hooked for life. To get these people hooked, they need to have positive experiences. We can help provide that positive experience. Stopping to offer directions or take a group picture go a long way. Helping a beginner up and on to appropriate terrain can help. Suggesting ski lessons is a real positive for those who want to enjoy skiing or riding sooner. Be an ambassador for the patrol, your area and the ski industry.

The cost of running a ski area rises every year. However, raising ticket prices during an economic downturn can kill an area quickly. If we don't want our areas to become history let's be extra friendly and helpful to all customers – especially the beginners.

I do prefer the living history like Whiteface at Lake Placid rather than the grown over ghost areas that still can be seen. I am going to try my hardest to be a friend to any skier who needs help or just offer friendly advice. Remember positive experiences bring lifetime enthusiasts. That is what is essential for the future of our ski areas and the ski industry.

Drive Home A Great Deal From Subaru!

Subaru of America, Inc. (SOA) invites NSP Members to participate in the Subaru VIP Partners Program!

Purchase or lease a new Subaru vehicle with no haggling, no negotiation, no pressure – just a great deal on a new Subaru!

Save between \$1300. - \$3300. off the Manufacturer's Suggested Retail Price (MSRP)** (depending on model and accessories), plus any applicable regional dealer or customer incentives in effect at the time of purchase. Special rates may also be available to qualified buyers should you prefer to finance or lease your new Subaru. All model lines (Forester, Impreza, Legacy, Outback and Tribeca) are included in this VIP Program offer, subject to availability and dealer discretion.

Please note, to receive VIP Partner pricing, all eligible members must receive an approved Dealer Visit Authorization form prior to contacting a Subaru dealer.

To request an authorization form, please visit the NSP Pro Page under the Member Services area at nsp.org.

You will be asked to provide your member number, name, home address, daytime telephone number, e-mail address, model you are interested in purchasing and your choice of participating dealer (if known). If a preferred dealer is not indicated, a dealer will be assigned based on your home address.

Upon verification of eligibility, NSP will forward a request for participation to VIP Program Headquarters where a Dealer Visit Authorization form will be processed and forwarded to the eligible member and dealer within twenty four hours.

Remember, VIP pricing will not be honored at the dealership without an approved Dealer Visit Authorization form presented upon entering the dealership. The VIP Program offer is non-transferable and is only available to the eligible member and their spouse or domestic partner residing in the same household (address verification required). All sales must be conducted by an authorized and participating Subaru dealer. The VIP program is available in the U.S. only, except for Hawaii.

Don't miss this opportunity!



Visit subaru.com to locate your nearest Subaru Dealer and to check out the Subaru lineup of vehicles!



*MSRP does not include tax, title and registration fees. Limited time offer subject to change without notice. Terms and conditions apply.

Rahlves and Plake Among Six in 2010 Class at U.S. Ski and Snowboard Hall of Fame

ISHPEMING, MI (October 14, 2010). World Champion ski racer Daron Rahlves, (Truckee, CA), one of the world's most noted big mountain skiers, the late Shane McConkey (formerly of Squaw Valley, CA) and iconic skiing legend Glen Plake, (Heavenly, CA) are among a roster of six skiers and builders named as inductees to the U.S. Ski and Snowboard Hall of Fame's Class of 2010. The announcement was made by Hall of Fame Chairman, Bernie Weichsel of Waltham MA.

They will be joined by Paralympic medallist and World Champion, Muffy Davis, (Salt Lake City, UT), national skiing champion from the 1960's and 70's and 1972 Olympian, Bobby Cochran (Surry, NH) and noted sports builder and Sun Valley owner, Earl Holding (Salt Lake City, UT). The class will be inducted on April 2, 2011 at Sun Valley, ID as part of a week long celebration of skiing history including Sun Valley's 75th season as a major ski resort.

"This year's Hall of Fame inductees include some great diversity in contributions to our sport," said Weichsel. "Each shares in common a great passion for skiing and each has made a tremendous difference in bringing recognition to this lifelong sport enjoyed by millions around the world."

Bobby Cochran is the third member of the famous skiing family from Vermont to enter the Hall of Fame, joining sisters Barbara (Class of '76) and Marilyn (Class of '78). Through the 1960's and 70's Cochran displayed exemplary dedication, discipline and excellence in state, national, collegiate, international and professional ski racing. He became, at the age of 16, one of the youngest skiers to be selected to the U.S. Ski Team and enjoyed a six-year career (1968-1974) before moving on to the World Professional Tour. His career of success started early when as a high school freshman he won the national junior championship in the giant slalom in 1967. He went on to win seven national titles between 1969 and 1973. He also added an NCAA downhill title to his resume. He won the prestigious Roch Cup downhill in 1971. In 1973, his best season, he became the first U.S. male skier to win a World Cup giant slalom and reached the podium in three out of four skiing disciplines. The highlight of that year was his winning the Hahnenkamm combined. Over three seasons from 1970 to 1973, Cochran achieved twenty-two top 10 placements on the World Cup Tour including four podium finishes.

Muffy Davis grew up racing with Picabo Street at Sun Valley until an accident in 1989 ended her career as an able bodied skier. She elected to return to her academic studies completing a degree at Stanford before returning to the slopes after attending Hall of Famer Sarah Will's adaptive skiing camp in 1995. Thus began an outstanding career resulting in four Paralympic medals (a bronze and three silvers), a World Championship gold in 2000 and back-to-back World Cup overall titles in 2000 and 2001. During her racing career she reached the podium 20 times. She also successfully completed first wheelchair ascents of Mount Shasta and Pike's Peak.

The sole sport builder in this class, Earl Holding, is known in the business world as the owner of Sinclair Oil and the Little America chain of hotels. But, in 1977, he purchased Sun Valley and began a revitalization and beautification program to restore the historic resort that in 1936 was among the first to be built in the United States. This investment program included the planting of over 7,000 trees, installing seven new detachable quad lifts and the world's largest automated snowmaking system. New lodges and other improvements were made to improve the skier and family experience, including an eight passenger gondola to the historic Round House Lodge. A Salt Lake City native, Earl Holding played a key role in bringing the 2002 Olympic Winter Games to that city and contributed significantly to its success. He purchased and developed Snowbasin into a world class ski area which hosted the men's and women's Olympic downhill, combined and super G events.

The late Shane McConkey has been called the most influential skier of his generation for popularizing free skiing and encouraging the development of equipment so more skiers could enjoy back country and deep powder conditions. In 1993 he won the World Pro Mogul Tour and added the South American Freeskiing championship in 1994. The next year he claimed the U.S. Freeskiing championship and twice won, in 1996 and 1998, the International Freeskier Association World Tour Championship. He was a leader in bringing "fat skis" to the slopes. In 2002, he helped develop the first reverse camber and reverse side cut ski, the Volant Spatula, and four years later introduced the K2 Pontoon. During

his career he was featured in 26 films about skiing and became a world leader in ski base jumping. He died in a ski base jumping accident on March 26, 2009.

With his signature multi-colored Mohawk hairstyle and his unrelenting enthusiasm for skiing, Glen Plake is certainly the best-known and recognizable skier in the world. The three time World Hot Dog skiing champion has become the symbol of the fun, joy and spirit of skiing. His outstanding ability on skis and personality have made him a skiing film star and many of the films that he has appeared in are now classics in the industry including "The Blizzard of Aahhh's" "Fistful of Moguls", "License to Thrill", "The Edge of Never, and this year. "Legend of Aahhh's." His television, and magazine appearances as well as commentary work is seemingly endless. He continues to promote skiing at all levels from his high altitude expeditions around the world to his "Down Home Tour" where Glen and his wife Kimberly ski at local areas around the United States.

Daron Rahlves retired from the U.S. Alpine Ski Team in 2006 as the single most decorated skier in the downhill with nine World Cup victories to his credit. Among his victories was his 2003 win at the historic and prestigious Hahnenkamm in Kitzbuhel Austria. Two years earlier he had stunned the highly knowledgeable and enthusiastic crowd at St Anton, Austria by beating local heroes Stephan Eberharter and Herman Maier for the World Championship gold medal in the super G. He capped his World Championship resume with a bronze medal in the giant slalom in 2005. His career record includes four U.S. titles and 16 World Cup podiums. An outstanding athlete he also holds the 1993 Expert World Championship title in jet skiing and has won many extreme skiing events. After leaving the alpine team Rahlves became one of the world's best ski cross athletes, leading the U.S.A. in the newest Olympic sport at the Vancouver Olympics, his fourth as a U.S. Olympian.

The Hall of Fame Induction will be held on Saturday, April 2nd in Sun Valley and will cap a week of festivities. The week will include the annual gathering of the International Skiing History Association as well as a series of industry reunions.

"Our annual induction ceremony has grown considerably the last two years with successful events at Park City Resort and Beaver Creek." said Weichsel. "This year's celebration will be even bigger and a great way to showcase these amazing heroes of our sport."

For more information regarding the induction ceremony, check the hall of fame web site at www.skihall.org

Region Reports

North Central Region

Mother Nature has blessed us with early snow, allowing areas to open early and providing great skiing for everyone in the Region. By now most refreshers and pre-season activities are complete, but we all have some great training opportunities yet to come.



David Dahl
North Central
Region Director

North Central Region will be purchasing the new 5th Edition OEC textbook and provide a copy to every current active IT in the Region and also provide one copy for each patrol in the Region. ARD Dave Conger will distribute the books when they arrive. Every patroller should obtain a copy of the new text. We encourage patrols to use fundraising events, grant writing and financial donations from businesses to raise the money needed to provide each of their patrollers with a copy of the new textbook.

NSP NC Region STE "Best Training Event Ever"

The 2011 rendition of the "Best Training Event Ever" was held on January 22nd at Ski Brule. On January 23, 2011, at Ski Brule, North Central Region held a SEM clinic for our senior candidate patrollers and a Senior Emergency Management calibration for instructors and evaluators.

Feb 12-13 is the Senior evaluation weekend at Marquette Mountain. Good Luck to all the Candidates.

Region award deadlines are approaching quickly, but you still have some time to get your award submissions sent to Marcia Locker. Deadline for Awards submissions is February 13, 2011. Awards Judging will be February 27, 2011.

Mark your calendar for the NC Region Spring Awards Banquet and Meeting, April 15-17. Section 2 will be hosting the event at the Waters of Minocqua. I'm sure we'll have on outstanding banquet and meeting. Training courses to be offered at the Spring meeting will be CPR; Instructor Update: 5th Edition, by Division staff; Instructor Development; Low Angle Rescue; Senior OEC Enhancement for Candidates and MTR I.

See the registration form in this issue for a complete listing of events. This is a great way to end your ski season with opportunities for training, sharing your ski stories and the camaraderie of fellow patrollers. You and your entire family can enjoy the Water Park or shopping in the many shops of Minocqua.

Ski Safe And Have Fun
David

Ohio Region



Bill Currier
Ohio Region
Director

Winter in Ohio is off to a great start. Most areas have been open since early December with ideal conditions. The cold weather seems to be continuing into January, e.g. I was at Perfect North Slopes this past weekend where it was 3 deg. F on Sunday morning.

By now our winter activities express has left the station, is well along on the journey and has already made several stops for some fun-filled educational events. An OEC Instructor Re-certification clinic and an SEM Calibration Clinic were held at Snow Trails on Nov. 13. More than 25 Ohio Region Patrollers participated in the Division S&T Clinic that was held at Boyne Highlands on Dec. 12-13. Two Region STW's will be complete by the time you read this, and the Region Certified Pre-Qualification and Recertification Clinic was held at Perfect North Slopes on Jan 10. SES's, TES's, and other skill-enhancing events are planned during January and February. In February the Region Senior S&T test will be held at Boston Mills. The Region SEM test will be held in March at Mad River Mountain. Check the Division calendar for details of these and other events.

Planning for the Fall Division Meeting and Awards Banquet is already well underway. As I announced at the Division Meeting in Sept., the Cincinnati Marriott at River Center has already been booked and a Friday evening riverboat cruise has been arranged. John McGoff, Perfect North Slopes, and his team are working other details as we speak. They will be reaching out to Division Staff, Ohio Region Patrols and other Regions for help and support as the planning progresses. If you have any thoughts, ideas or suggestions for the meeting, feel free to send them to either John or myself. More details will be available in the Spring RPN and on the Division web site.

As a result of Dave Cobb's (ARD Line) retirement, the Ohio Region Leadership Team has been restructured. Guy Day, Boston Mills/Brandywine, has moved from ARD Administration to ARD Line. Bruce Heichlebech, who is completing his final term as PR at Paoli Peaks, has been named to fill the position of ARD Administration. Frank Cleary, Perfect North Slopes, and Jay Zedak, Boston Mills/Brandywine remain in their respective ARD positions.



Photos from Ohio Region Certified event held at Perfect North Slopes. Photos by: AJ Waltz, Perfect North Slopes patroller.

I am looking forward to another great season and hope to see many of you at the various events that we have planned. Have a safe and successful 2010 / 2011 season.

Bill Currier, Ohio Region Director



An American at World Cup Races

Editor's Note: Afton Alps patroller Charlie Cutter volunteered for service at the December Women's World Cup races in Banff/Lake Louise Canada. Below are excerpts from his blog. To enjoy more stories, details and a lot of photos, log on to Charlie's blog at <http://charlie-worldcup2010.blogspot.com/>

Greetings once again from Lake Louise...

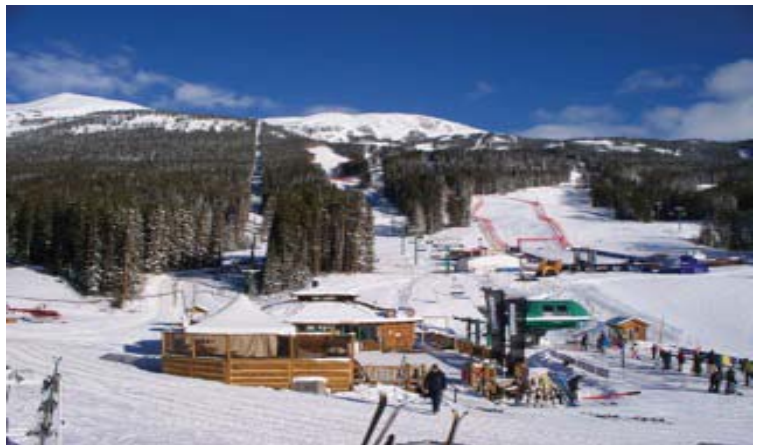
Tuesday we awoke to snow--Funny thing about snow... as skiers we DREAM about snow--LOTS and LOTS of snow... Working at a World Cup race we DO NOT WANT SNOW !

The race course is smooth and "ice like"--in fact they "inject" water into the snow to make it harder. Once the course is "set", they want to keep it that way, and having snow fall on it is NOT WANTED!

So, Tuesday morning, it had snowed for a few hours--the light and fluffy kind that looks so beautiful and is lovely to watch fall down--well it continued all day... The "training run" went as planned, but it makes the job of keeping the race course fast and safe a very challenging endeavor.

I had mentioned the fact that we use helicopters... It is called H.E.T.S. Helicopter Extrication Transportation System. We use them because the race course is completely lined in nets, icy and steep, and the run down on a toboggan would be "challenging" to say the least--PLUS it is faster and safer for the skiers. When we have the skiers "packaged" i.e., on a backboard and in a special bag, the helicopter then picks up the skier and off they go--straight to the hospital.

I worked a "training" scenario today (we are constantly practicing) and had a skier examined, treated, and packaged in less than 15 minutes!



View from deck of chalet looking up at race finish line.



This is the second helicopter. Since this is a "World Class" event in case we "fly someone" we have to have a bac up to continue the race.



At the end of the day, silver medal in hand, Lindsey Vonn walked over to where the medical folks were and graciously had us take a picture with her.

Friday Dec. 3rd...

Today it was "for all the marbles".

The first Ladies "speed event" of the 2010-2011 season.... Lindsey Vonn skied 16th, and when finished had over a ONE SECOND lead on everyone else--(Mind you 1 second is HUGE in a sport measure by 100th's of a second) Unfortunately it didn't last but two racers as Maria Riesch (GER) came down and was leading by .012 seconds...Julia Mancuso had a great run and was third until Elisabeth Goergl beat her out, leaving her fourth when all the racers were finished.

We do it all over again tomorrow (Saturday) with ANOTHER full downhill (they do this in case a downhill gets canceled further into the season, they have one "in the

Sunday, and it is all over.

Another "blue bird" day here at Banff/Lake Louise! Sunny, a bit cool (@ -15c or +2F).

I was blessed to be at the START of the Woman's Downhill--The ladies run two, so they can have "one in the bank", in case later in the season they are "weathered" out.

This is Lindsey Vonn-- just as she is starting down the course... She had an AMAZING RUN! She had the lead 1/2 way down, but coming over "Fallaway" she slipped, rode her hip, corrected and kept going... when she straightened herself up, she was .45 seconds behind... by the end of the race, she was .40 AHEAD !!!! unfortunately, Maria Reisch (GER) who ran 2 people later ended up beating her by .10-- if Lindsey hadn't gone down, first place would have been hers-- she settled for 2nd. Julia came in 6th.



Central Division Staff Roster

Administrative Staff



DIVISION DIRECTOR

Jim Woodrum

5151 South Lake Shore Drive
Cedar, MI 49621
H) 231-228-2277
jrwoodrum@centurytel.net



WEB MASTER

Chris Raudabaugh

173 Tar Heel Drive
Delaware, OH 43015
H) 740-369-9634
W) 740-368-5931
chris@raudabaugh.net



ELECTIONS/MEETINGS/ MSAA

Ken Meldahl

63 North Avenue
Fox Lake, IL 60020
H) 847-587-2397
C) 847-204-0634
kmeldahl@comcast.net



LEGAL & RISK MNGMT

Kevin McQuillan

916 Spindletree Avenue
Naperville, IL 60565
H) 630-357-6979
W) 630-960-1242
kmcquillanusa@hotmail.



TREASURER

Joe Hamel

961 County Road 480
Marquette, MI 49855
H) 906-249-9157
C) 906-249-5614
jrham122036@yahoo.com



REGISTRATION

Sherwin VanKlompberg

7311 Calibre Park Dr A104
Durham, NC 27707
H) 919-251-8215
C) 231-881-8585
svanklompberg@nc.rr.com



ADMIN. ASSISTANT

Frank Cleary

22998 Cleary Lane
Guilford, IN 47022-9691
H) 812-487-2221
C) 812-363-6357
fcleary@hotmail.com



MEDICAL

Stephen Werner

PO Box 368
Clarkston, MI 48347
H) 248-625-2730
W) 248-332-8391
steve.werner@usa.net



ALUMNI

Carrington Beach Day

5820 Lodgepole Rd
Harbor Springs, MI
49740
H) 231-526-6496
C) 231-881-1920
cbday@chartermi.net



RUSTY PARKA NEWS

Tim Zimmerman

7472 Stonefield Trail
Schofield, WI 54476
C) 715-218-3328
W) 715-536-7176
tzimmerman@
mitchellmetalproducts.com

Region Directors



EMI REGION DIRECTOR

Derek Werner

PO Box 393
Clarkston, MI 48387
H) 248-342-1970
C) 248-342-1970
derek.werner@usa.net

Region Directors Continued



NC REGION DIRECTOR

David Dahl

T16006 County Highway
W
Merrill, WI 54452
H) 715-536-4705
W) 715-355-2342
david.dahl@greenheck.



OH REGION DIRECTOR

Bill Currier

190 Ballantrae Drive
Sagamore Hills, OH 44067
H) 330-467-6787
C) 630-815-6077
curriewd@aol.com



W MI REGION DIRECTOR

Tony Wolfer

7840 Myers Lake Rd
Rockford, MI 49341-9634
H) 616-874-1231
ajcjwolfer@chartermi.net



N MI REGION DIRECTOR

Robert Lechtanski

5019 North Conway Rd
Alanson, MI 49706
H) 231-529-6209
C) 231-392-4279
lechtanski@centurytel.net



S REGION DIRECTOR

Billy Dick

7807 28th Avenue
Kenosha, WI 53143
(h) 262-654-8844
bjdick@ameritech.
net



W REGION DIRECTOR

John 'JT' Thomas

72212 300th Ave
Lake City, MN 55041
H) 651-345-5160
C) 507-254-9067
jtskibum@myclearwave.net



SC REGION DIRECTOR

Tony Ortega

W228 S5055 Mill Ct
Waukesha, WI 53189
W) 262-574-8962
C) 262-271-8541
tobogganguy006@gmail.com



ADD

Brian Cobble

72 Deer Meadow Trail
Valparaiso, IN 46385
H) 219-462-2239
W) 219-764-5252
skicrud@comcast.net



PUBLIC RELEATIONS

Ty Damon

4222 Maybee Rd
Lake Orion, MI 48359
H) 248-393-3203
W) 313-596-9101
tdamon@rworksglobal.
com



SKI SCHOOL DIR.

Dan Moss

5576 Davison Dr
Hilliard, OH 43026-8456
W) 614-578-9002
dan@mossremodeling.
com



PSIA LIAISON

Tom Anderson

112 Pineview Drive
 Marquette, MI 49855
 H) 906-228-6126
 W) 906-475-7640
 tpanderson@charter.net



TOBOGGAN

Tom Worley

7231 Overland Ct. Park
 West Chester, OH 45069
 H) 513-860-4411
 C) 513-304-7021
 tom.worley@cinci.rr.com



ADD

Dan Somalski

1014 W. Nebobish
 Essexville, MI 48732
 H) 989-892-0244
 W) 989-893-0000
 dans426@yahoo.com



AVALANCHE

Dale Mihuta

5793 Filview Circle
 Cincinnati, OH 54248
 H) 513-574-2510
 W) 513-919-3129
 dmihuta@fuse.net



AWARDS

Gregg Reese

11308 Stonybrook Dr.
 Grand Blanc, MI 48439
 H) 810-695-6737
 W) 810-743-7070
 reese-nsp@comcast.net



MTN TRAVEL & RESCUE

John Wachter

12107 Duane's Dr
 Galena, IL
 H) 815-986-8259
 rock_ski@hotmail.com



NORDIC ADVISOR

Peter Wollan

1701 10th St NE
 Rochester, MN 55906
 H) 507-281-9769
 peter.wollan@gmail.com



OEC

Karen Hadden

15805 Kane Rd
 Plainwell, MI 49080
 H) 269-664-4753
 W) 269-341-8336
 haddenk@bronsonhg.org



OEC

Kathy Glynn

728 Castleton Court
 Eagan, MN 55123
 H) 952-686-0001
 angelw499@aol.com



AUXILIARY

Open

ADD

Linda Murphy Jacobs

PO Box 242
 Omena, MI 49674
 H 231-386-9080
 C 231-632-4289 murph4@
 charterinternet.com



INSTRUCTOR DEVL

Virginia Rodeman

1817 Potomac Dr.
Toledo, OH 43067
H) 419-536-1179
W) 419-531-1618
rodewoman@yahoo.com



WOMEN'S SEMINAR

Sandi Hammons

5517 Regal Ridge Drive
Burlington, KY 41005
(h)(859) 586-8090
(c)(859)466-8496
hammons@insightbb.com



SKILLS DEVELOPMENT

Don Loerch

889 Central Drive
Lake Orion, MI 48362
C) 248-778-7658
dloerch@sbcglobal.net



CERTIFIED

Mike Longfellow Jones

5442 Red Fox
Brighton, MI 48114
H) 810-229-1662
W) 313-248-6151
mjones1@ford.com



P101 (Intro To Patrolling)

Jeannine Mogan

5755 132nd St W
Savage, MN 55378
H) 952-846-4989
C) 612-710-2186
jmogan@threeiverspark-
district.org



SENIOR

Jay Zedak

1822 Weymouth Drive
Hudson, OH 44236
H) 330-655-5258
W) 330-650-2858
C) 330-958-5800
jay@bugbusterinc.com

CENTRAL DIVISION STAFF ROSTER



The official newspaper for the
National Ski Patrol®, Inc.
Central Division

The *Rusty Parka News* is published three times
annually.

2010 NATIONAL SKI PATROL®, INC. CENTRAL DIVISION

All rights reserved. The words "Ski Patrol" and "National Ski Patrol" are
trademarks registered in the U.S. Patent Office

Division Director

Jim Woodrum
5151 South Lake Shore Dr.
Cedar, MI 49621
231-228-2277

Editor

Tim Zimmerman
7472 Stonefield Trail
Schofield, WI 54476
715-298-9070

EDITORIAL STATEMENT

The appearance of advertising material in the *Rusty Parka* does not imply that the National Ski Patrol endorses any product, service or company unless specifically stated. Statements or opinions expressed in the *Rusty Parka* reflect the views of the author(s) and are not necessarily the views of the National Ski Patrol, its officers, staff, board of directors or members. The *Rusty Parka* will assume no loss or liability for loss or damage to any material submitted for publication including manuscripts, photographs, or art work. All contributions and submissions are subject to revision or editing at the sole discretion of the Editor. The act of mailing, submitting or transmitting materials to the *Rusty Parka* shall constitute an express warranty by the author or contributor that the material is original and in no way an infringement upon the rights of others.

Letters to the Editor

Letters to the Editor must be submitted electronically to tzimmerman@mitchellmetalproducts.com. The RPN reserves the right to publish and withhold letters based on content and length. Letters in excess of 250 words may be edited due to space limitations.

ADDRESS CHANGES

Changes to address should be updated on the NSP National Web Site. Please log on to www.nsp.org and access your NSP Member Page to update your personal information. The *Rusty Parka* e-mail list is downloaded from the National database. All address changes and corrections must be made on the National site.

CENTRAL DIVISION CALENDAR

Start Date	End Date	Category	Region	Location	Description	Contact
1/27/2011	1/27/2011	OECE	Eastern Michigan	Alpine Valley	OECE Enhancement Seminar - Backboard	Allen Radke - (734) 455-4745 or theradkes@sbcglobal.net
1/28/2011	1/28/2011	CERTIFIED	Southern	Chestnut	Southern Region Qualification and Certified Awareness clinic @ Chestnut - Contact Patrick Perlman patrick@lightspc.com	Patrick Perlman
1/29/2011	1/29/2011	OTHER EVENTS	North Central		Noquemanon Ski Race	Jim Grundstrom jimgrundstrom@freichevy.com 906-475-7877
1/29/2011	1/29/2011	TESTING/TRAINING	Ohio	Big Creek	SES/SNES 8:30 AM	Amy Arnold, luciawave@mac.com
1/29/2011	1/29/2011	TESTING/TRAINING	Southern	Sundown Ski Area, IA	SES	
1/29/2011	1/29/2011	TESTING/TRAINING	Southern	Sundown Ski Area, IA	SES	
1/29/2011	1/30/2011	CERTIFIED	Western	Lutsen Mtn.	Western Region Re-certification / Qualification clinic @ Lutsen Mtn. contact Terry Spohn [aktscl@comcast.net]	Terry Spohn
1/30/2011	1/30/2011	TESTING/TRAINING	Eastern Michigan	Pine Knob	EM1 Basic Ski & Toboggan Evaluation	Mike Schons - (248) 761-0168 or mschons@yahoo.com
1/30/2011	1/30/2011	TESTING/TRAINING	Ohio	Boston Mills	SES/SNES 8:30 AM	Amy Arnold, luciawave@mac.com Layton Ives, layton.ives@LFG.com
1/30/2011	2/1/2011	TESTING/TRAINING DEADLINES	Southern	Chestnut Mt. Ski Area, IL	TES/SES	
2/1/2011	2/1/2011	TESTING/TRAINING	Eastern Michigan	Mail/Email	Senior SEM Scenario Skill Sign-off Deadline	Mike Case - (586) 247-8277 or emtski@comcast.net
2/5/2011	2/5/2011	TESTING/TRAINING	Northern Michigan	TreeTops Ski Resort	NMR Snowsport Enhancement Seminar & Toboggan Enhancement Seminar	Jim Markey - jim_markey@ameritech.net / Mike Leach - mtleach@umich.edu
2/5/2011	2/5/2011	TESTING/TRAINING	Ohio	Snow Trails	TES - 8:30 AM	Troy Southwick, TSouthwick@Limitedbrands.com
2/5/2011	2/5/2011	TESTING/TRAINING	Ohio	Paoli Peaks	SES/SNES 8:30 AM	Amy Arnold, luciawave@mac.com Bruce Heichelbrech, PR, heicheldog@insightbb.com
2/5/2011	2/5/2011	AWARDS	Southern		Deadline for award nominations	kmeldahl@comcast.net
2/6/2011	2/6/2011	TESTING/TRAINING	Eastern Michigan	Mt. Holly	EMR3 Basic Ski & Toboggan Evaluation	Roxanne Usewick - roxmu@sbcglobal.net
2/6/2011	2/6/2011	TESTING/TRAINING	Eastern Michigan	Mt. Brighton	EMR2 Basic Ski & Toboggan Evaluation	Dave Petrak - (810) 227-8430 or dpetrak@a2gov.org
2/6/2011	2/6/2011	TESTING/TRAINING	Northern Michigan	Nubs Nob Ski Resort	NMR Section # 1 Basic Ski, Snowboard & Toboggan Handling Proficiency Exam	Carl Woodcock - carl.woodcock@sbcglobal.net / Dan Dryden - drphoton@yahoo.com
2/6/2011	2/6/2011	TESTING/TRAINING	Ohio	PNS	SES/SNES 8:30 AM	Jon French, frenchje@gmail.com
2/6/2011	2/6/2011	TESTING/TRAINING	Ohio	Mad River Mounain	TES - 8:30 AM	Troy Southwick, TSouthwick@Limitedbrands.com
2/12/2011	2/12/2011	TESTING/TRAINING	Eastern Michigan	Boyne Mountain	Senior Ski & Toboggan Evaluation	Derek Werner - (248) 342-1970 or derek.werner@usa.net
2/12/2011	2/13/2011	SENIOR	North Central	Marquette Mountain	Region Senior Evaluation	Les Robinson lrobbins@wctc.net 715-325-3025
2/12/2011	2/12/2011	TESTING/TRAINING	Ohio	Alpine Valley	TES - 8:30 AM	Troy Southwick, TSouthwick@Limitedbrands.com
2/13/2011	2/13/2011	DEADLINES	North Central		Awards Submission Deadline	Marcia Locher rocher@charter.net
2/13/2011	2/13/2011	TESTING/TRAINING	Ohio	Boston Mills	TES - 8:30 AM	Troy Southwick, TSouthwick@Limitedbrands.com
2/18/2011	2/20/2011	TESTING/TRAINING	Eastern Michigan	TBD	MTR Fundamentals & Level II - Field Session	Chuck White - cwhite@kettering.edu
2/19/2011	2/19/2011	TESTING/TRAINING	Eastern Michigan	Independence Oaks	Nordic Ski Clinic (10:00 AM)	Jon O'Dell - (586) 718-4503 or bikenski1@yahoo.com
2/19/2011	2/19/2011	TESTING/TRAINING	Northern Michigan	Osseo Ski Club Resort	NMR Section #2 Ski, Snowboard & Toboggan Handling Proficiency Exam	John Wallace - john.wallace@aesculap.com / Chuck Thomas - chuckthomas48192@yahoo.com
2/20/2011	2/20/2011	MOUNTAIN TRAVEL AND RESCUE	Eastern Michigan	Mt. Holly	MTR Level II - Class Session (8:00 AM)	Chuck White - cwhite@kettering.edu
2/20/2011	2/20/2011	TESTING/TRAINING	Eastern Michigan	Snow Snake	EMR3 Basic Ski & Toboggan Evaluation	Roxanne Usewick - roxmu@sbcglobal.net
2/20/2011	2/20/2011	TESTING/TRAINING	Northern Michigan	Mt Holiday Ski Area	NMR Section #3 Ski, Snowboard & Toboggan Handling Proficiency Exam	Ann-Mary Petroskey - petalal@yahoo.com / Jeff Summers - jifreerides@aol.com
2/21/2011	2/21/2011	AWARDS	Northern Michigan	Royal Oak, MI	Individual Award Deadline	Rich Jacques - rjacques@dso.org
2/26/2011	2/26/2011	NORDIC	North Central	Hayward, WI	American Birkebeiner	Barbara Wheeler bawheelerski@msn.com
2/26/2011	2/26/2011	SENIOR	Ohio	Boston Mills	Senior Alpine Ski and Toboggan Clinic - 8:30 AM	Amy Arnold, luciawave@mac.com Troy Southwick, TSouthwick@Limitedbrands.com
2/26/2011	2/27/2011	SENIOR	Southern	Chestnut Mt. Ski Area, IL	Senior Ski & Toboggan Evaluation	Lauren Vaerewyck
2/27/2011	2/27/2011	AWARDS	North Central		NC Awards Voting	Marcia Locher rocher@charter.net
2/27/2011	2/27/2011	SENIOR	Northern Michigan	Boyne Mountain Ski Resort	NMR Senior Snow Sport and Toboggan Handling Proficiency Evaluation	Jim Markey - jim_markey@ameritech.net / Mike Leach - mtleach@umich.edu
2/27/2011	2/27/2011	TESTING/TRAINING	Northern Michigan	Boyne Mountain Ski Resort	NMR Senior Snow Sport and Toboggan Handling Proficiency Evaluation	Jim Markey - jim_markey@ameritech.net / Mike Leach - mtleach@umich.edu
2/27/2011	2/27/2011	TESTING/TRAINING	Ohio	Boston Mills	Senior Alpine Exam - all day	Tom Tavenner, tom@tavgroup.net
2/28/2011	2/28/2011	AWARDS	Northern Michigan	Royal Oak, MI	Outstanding Awards Submissions Deadline	Rich Jacques - rjacques@dso.org
3/1/2011	3/1/2011	DEADLINES	Eastern Michigan	E-mail	Downhill Edge Spring Deadline	Russ Livermore - (248) 761-8371 or rlivermore3@comcast.net
3/1/2011	3/1/2011	OECE	Eastern Michigan	Mt. Holly	OECE Class Begins	Rich Hansen - (248) 391-3755 or teamhansen@comcast.net
3/2/2011	3/2/2011	AWARDS	Eastern Michigan	E-mail	Awards Write-ups Deadline (All Patrols)	Dennis Heeger - dennisheeger@comcast.net
3/3/2011	3/5/2011	CERTIFIED	Eastern Michigan	Lutsen, Minn.	Certified Exam	Tim Gaffney - (810) 664-9571 or tobogganrunners@charter.net
3/3/2011	3/5/2011	CERTIFIED	North Central	Lutsen	Certified annual meeting and evaluation at Lutsen Mtn.	Greg Kerwin gkerwin@juno.com
3/5/2011	3/5/2011	OTHER EVENTS	North Central	Minocqua Winter Park	Lakeland Loppet Ski Race	906-226-2431 Betty Adams mbadams@newnorth.net
3/6/2011	3/6/2011	TESTING/TRAINING	North Central	Ski Brule	Brule Candidate Evaluation	715-588-7731 Joe Matuszak jmtooz@aol.com 920-865-7608
3/6/2011	3/6/2011	MEETING	Northern Michigan	TreeTops Ski Resort	NMR Awards Committee Meeting	Rich Jacques - rjacques@dso.org
3/6/2011	3/6/2011	AWARDS	Northern Michigan	TreeTops Ski Resort	NMR Awards Committee Meeting	Rich Jacques - rjacques@dso.org

CENTRAL DIVISION CALENDAR

Start Date	End Date	Category	Region	Location	Description	Contact
3/6/2011	3/6/2011	MEETING	Northern Michigan	TreeTops Ski Resort	NMR OPS Committee Meeting	Robert Lechtanski - lechtanski@centurytel.net
3/7/2011	3/7/2011	SENIOR	Northern Michigan	Alanson, MI	NMR OEC SEM Paperwork Deadline	Tena Lechtanski - tenahaye@umich.edu
3/7/2011	3/7/2011	DEADLINES	Northern Michigan	Alanson, MI	NMR OEC SEM Paperwork Deadline	Tena Lechtanski - tenahaye@umich.edu
3/9/2011	3/9/2011	AWARDS	Eastern Michigan	Mt. Holly	Awards Review Meeting	Dennis Heeger - dennisheeger@comcast.net
3/12/2011	3/12/2011	SENIOR	Eastern Michigan	Mt. Holly	Senior SEM Evaluation (8:00 AM)	Rae Ann Ruddy - (248) 6672-7511 or ruddy@oakgov.com
3/12/2011	3/12/2011	OTHER EVENTS	North Central	Calumet, MI	Great Bear Chase Ski Race	Barbara Wheeler bawheelerski@msn.com 906;487;9695
3/12/2011	3/12/2011	OEC	Ohio	Mad River Mounain	SEM Calibration Clinic for SEM Evaluators - held the evening before the SEM	Dave Baumlein dbaumlei@insight.rr.com
3/13/2011	3/13/2011	SENIOR	Ohio	Mad River Mounain	SEM 8AM to 4PM	Dave Baumlein dbaumlei@insight.rr.com
3/20/2011	3/20/2011	MOUNTAIN TRAVEL AND RESCUE	Eastern Michigan	Mt. Holly	MTR Fundamentals & Level I - Class Session	Chuck White - cwhite@kettering.edu
3/20/2011	3/20/2011	SENIOR	Northern Michigan	Boyne Highlands Ski Resort	NMR SEM Proficiency Evaluation	Tena Lechtanski - tenahaye@umich.edu
3/20/2011	3/20/2011	TESTING/TRAINING	Northern Michigan	Boyne Highlands Ski Resort	NMR SEM Proficiency Evaluation	Tena Lechtanski - tenahaye@umich.edu
3/20/2011	3/20/2011	SENIOR	Southern	Wilmot Mt. Ski Area, WI	SEM	Len Kunkel
3/21/2011	3/21/2011	INSTRUCTOR DEVELOPMENT	Ohio	Boston Mills	Instructor Development Class, session 1, 7- 10 pm	Janet Glaeser, janet7409@cox.net Freddie Shima, freddie2042@sbcglobal.net
3/23/2011	3/23/2011	INSTRUCTOR DEVELOPMENT	Ohio	Boston Mills	2nd session, Instructor Development Class, 7-10 pm	Janet Glaeser, janet7409@cox.net Freddie Shima, freddie2042@sbcglobal.net
3/26/2011	3/26/2011	MOUNTAIN TRAVEL AND RESCUE	Ohio	PNS	MTR Fundamentals Course	Bill Schick (bill.schick@duke-energy.com)
4/1/2011	4/1/2011	DEADLINES	Eastern Michigan		Administrator Report Deadline	Derek Werner - (248) 342-1970 or derek.werner@usa.net
4/1/2011	4/1/2011	DEADLINES	Eastern Michigan		Expense Report Deadline	Sharon Hazen - rhazen@comcast.net
4/8/2011	4/10/2011	MEETING	North Central	Chicago	Central Division Ski Board Meeting	Jim Woodrum
4/15/2011	4/17/2011	MEETING	North Central	Waters of Minocqua	NC Region Awards Banquet	
4/17/2011	4/17/2011	MOUNTAIN TRAVEL AND RESCUE	Eastern Michigan	Independence Oaks	MTR Fundamentals & Level I - Field Session	Chuck White - cwhite@kettering.edu
4/30/2011	4/30/2011	MEETING	Ohio	BMBW	Ohio Region 2011 Spring Meeting and Awards Banquet	Bill Currier, curriewd@aol.com
4/30/2011		BANQUET	Southern	Grand Geneva Ski Area, WI	Annual Region Awards Banquet	Julie Timmons
5/1/2011		MEETING	Southern	Grand Geneva Ski Area, WI	Region Advisors Meeting	Patrick Perlman
5/4/2011	5/4/2011	MEETING	Eastern Michigan	Genesys Conv. Center	Spring Meeting (Patrollers Welcome)	Derek Werner - (248) 342-1970 or derek.werner@usa.net
5/7/2011	5/7/2011	MEETING	Northern Michigan	TBA	NMR Spring 2011 BOD Meeting	Robert Lechtanski - lechtanski@centurytel.net
5/7/2011	5/7/2011	AWARDS	Northern Michigan	TBA	NMR Awards Banquet	Rich Jacques - rjacques@dso.org
5/14/2011	5/14/2011	BANQUET	Eastern Michigan	EMR2	Awards Banquet	Dave Petrak - (810) 227-8430 or dpetrak@ci.ann-arbor.mi.us
8/21/2011	0000-00-00	INSTRUCTOR DEVELOPMENT	Eastern Michigan	Mt. Holly	Instructor Development	Lynn Hunt - (810) 701-9181 or mhsplynn@yahoo.com
9/9/2011	9/11/2011	MEETING	Ohio	Ohio	Central Division Fall Meeting and Awards Banquet	Jim Woodrum
9/9/2011	9/11/2011	MEETING	Ohio	Marriott at River Center, Cincinnati, OH	Central Division Meeting, Banquet and Awards Ceremony hosted by Ohio Region	Bill Currier, curriewd@aol.com John McGoff, jmcgoff@aol.com

**For the Most Up to Date Calendar Information, Please Log on to
www.nspcentral.org**

**Calendar Information Displayed Here is Accurate as of
Publication Date and is Subject to Change.**