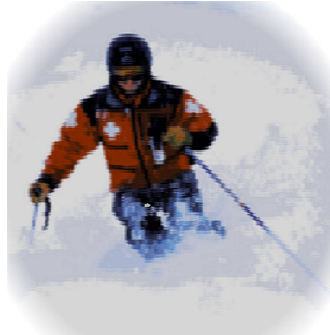




# Rusty Parka News



Vol. 51 Issue 3 [www.nspcentral.org](http://www.nspcentral.org) Summer 2013

## Division Director's Report



Congratulations JT! I am sure by now most everyone knows that John Thomas "JT", Western Region RD, was elected Division Director, effective July 1, 2013. My request to all Central Division members is to provide the same level of support to JT and his new team that you have provided the retiring team. I have the utmost confidence in JT and the team he has assembled. They have fresh ideas and we can all look forward to their leadership of the Central Division.

JT and I attended the 2013 Summer National Board Meeting. The Division Director Team met the day before the Board Meeting. The DDs are well aligned and are assisting the National Board to focus on strategic issues facing the NSP and not details of operational issues facing the National Office. JT is well entrenched and is already a contributing member of the DD Team.

**Brian Cobble**  
Interim Division Director

As I am retiring from the Central Division Board, I would like to take this opportunity to thank everyone for the support that I have received during my tenure. Ski Patrollers all over this great county are a cut above, but Central Division patrollers are top shelf. You make me proud to say I am a patroller from the Central Division!

Respectfully,  
Brian

## Parka Picks

Nat'l Board Report	Pg. 3
Kasten's Korner	Pg. 4
ADD Reports	Pg. 4
Incoming Staff	Pg. 6
RD Reports	Pg. 7
Somalski Memorial Fund	Pg. 9
Supervisor Reports	Pg. 10
Election Results	Pg. 12
Berkie	Pg. 15
Fall CD Meeting	Pg. 20
Fall Meeting Reg Form	Pg. 24
Calendar	Pg. 30
MTR Photo Feature	Pg. 31

**Central Division Fall Meeting and Banquet Details Pages 20 - 24**

# Incoming Division Director's Report



**John "JT"  
Thomas  
Division Director**

Hello, I'm your new Division Director, John (JT) Thomas.

To start, I would like to say thank you to all the people that supported me in my quest and journey to be your leader of the Central Division. I would also like to say thank you to all the fellow patrollers that mentored me during my journey. There are too many to list in this article and you know who you are, so thank you for the past and future mentoring. I would also like to say thank you to all that joined the Division Staff to assist me in bringing as many of the NSP programs to you the patroller as we can. You will see a few new faces and a few old faces on the staff. The new staff is listed on the Central Division Web page and in this issue of the RPN. Photos of the new staff will be available in the Fall issue. Our outgoing staff is listed in this, the final RPN of the 2012 - 2013 season on the staff roster page.

To give you a little background on me: I started my Ski Patrol career in the fall of 1980. I became an American Red Cross first aid and CPR instructor the next season and helped with the on-the-hill training. I have been involved in training new and existing patrollers in their ski patrolling journey from the new candidate to the Certified patroller ever since. I plan on continuing training and mentoring as the Division Director. I patrol at an area in Minnesota called Welch Village Ski Area. Welch Village Ski Area is located approximately 50 miles southeast of the Minneapolis-St Paul metropolitan area. I was the past Western Region Director and, before that, was the Patrol Representative at Mount Frontenac Ski Area (which closed approximately 11 years ago).

Enough about me, what is important is you. Ski patrolling is a way of life and is a journey. It's about learning as much as you can about the ski industry and the medical care we give as Patrollers. Some of us focus on the medical side and others on the snow side. Whichever side you have been focusing on, perhaps it's time to think about adding more of the other side to your journey. Pick a goal for the up-coming season and commit to your goal. Whether it's helping out at the OEC candidate class to improve your skills or taking a Mountain Travel and Rescue course. Pick your goal and commit to it. Like everything in life you have to commit to your goal to accomplish it. We all can improve in life and we can use our Ski Patrol journey to help us obtain our goal.

I would like to talk to you about another VERY IMPORTANT topic. That is the National Board Elections. Every year we elect new board members to the National Board. A board member's term is 3 years however, there is a rotation that creates a election every year for the NSP members. This election is very important to you as a member. I need you to vote. I have heard from many of you that you don't know these people and have no idea who to vote for. The Division staff will rank each of the candidates. You have a choice: you can review the slate when it is announced, use the data the Division staff creates or use a combination of all the information to make your voting selection. The most important item is that you vote.

***Last year the Central Division had the largest voter participation of all the NSP divisions. The rest of the NSP organization took notice. We, the Central Division, need to increase our voter participation. You ask why? We need to make sure the National Board listens to the members. That is you. If the Central Division increases the voter participation again this year, we continue to use our voting power to shape the NSP. The hostile take-over of the National Board will be squashed. The hostile take-over was when 4 National Board members decided to file legal action against the NSP. The 10 Divisions banded together and asked the four to stop the legal action against the NSP and resign from the National board. The 10 Division leadership team believed, and still do, it was the four board member's fiduciary responsibility to work with the entire National Board to solve the issues they had. They didn't resign and are running for their second term. We also need board members to not interfere with the day to day operations of the National Office and of the local patrols in different Divisions. The National board member cannot and shouldn't be taking actions that give the vision that their statements/opinions represent the National Ski Patrol Board. Because of this interference we have lost 2 Executive Directors. How does this effect you? Every time we replace the Executive Director, it costs the organization the money for re-training. We need Board members that will stay out of the day to day operation,***

***I need your help in stopping this behavior. The Central Division will continue to work and drive to be the model division of the NSP. If we don't band together and stop the hostile take-over of the National Board, the***

**issues and concerns that we as patrollers have will not be addressed in a fashion that has every patroller in the NSP's best interests in the forefront. Please talk to your fellow patrollers and convince them to vote in the next National Board election coming this fall.**

Have a great and safe summer. I hope to see you at the Fall Division meeting in Wausau, Wisconsin in September.

JT,  
your new Division Director.

# National Board Member Report



**Jim Woodrum**  
**Past Division**  
**Director**

A Patroller's Journey is a Lifelong Commitment

**Wikipedia defines the following:** "Excellence is a talent or quality which is unusually good and so surpasses ordinary standards. It is also used as a standard of performance."

Recently, I had the opportunity to spend some quality time with an area owner and we discussed the word excellence as it relates to patrollers and his approach to managing his ski area. I was very impressed with what he valued in his definition of excellence. To do some paraphrasing, he indicated that he expected everyone in his organization to strive for excellence. To him excellence means that each employee and patroller be the best they can possibly be and gain the knowledge and skills to be the best at what they do. Once they have gained that competence he expects them to multi-skill/task. In other words: add more skills in other areas of the operation. In doing so, it helps the overall operation to ensure that no department is left without a backup. As a patroller, in addition to providing first aid, transportation, and lift evacuation, he expects us to step up to help with customer service, crowd control on a busy day, extra event support, etc. Not that this becomes the norm, but when things start happening we are there to pitch in. That

is what makes the area successful and gives us the ability to contribute at a higher level when we are able to multi-task when needed.

So, how do we as patrollers achieve excellence in patrolling? Think back to when we first became patrollers. Achieving excellence in OEC was practice, practice, practice; back-boarding, traction splinting, the many uses of cravats, etc., etc.. I don't know about you, but I must have performed each of these tasks hundreds, maybe even thousands of times, until it was almost like putting on a pair of shoes. Today, many of us can frankly do it without even thinking about it anymore or doing it blindfolded. That is approaching excellence! Then when you become an instructor in this program you study even more to be able to teach these skills to another patroller. If you want to continue your journey after being an instructor you work toward becoming an IT in a particular discipline. With each step in this journey, you become more and more competent and contribute at an ever increasing level. Each of us has the opportunity to "Strive for Excellence" in nearly any field we want. Take skiing for example: some of us come to patrolling with excellent ski skills, others not so much. Some will use those ski skills to teach toboggan handling with excellence, others will take the path to teach skiing and go through PSIA/AASI or the Coaching licensing process to develop our skills at the highest level. Yet others continue their journey in these disciplines by going through the evaluation process and become credentialed evaluators. The journey continues with teaching skiing to patrollers, some go on to teach the skiing public, others become evaluators for classifications in the NSP world. So, pick a discipline and begin your journey.

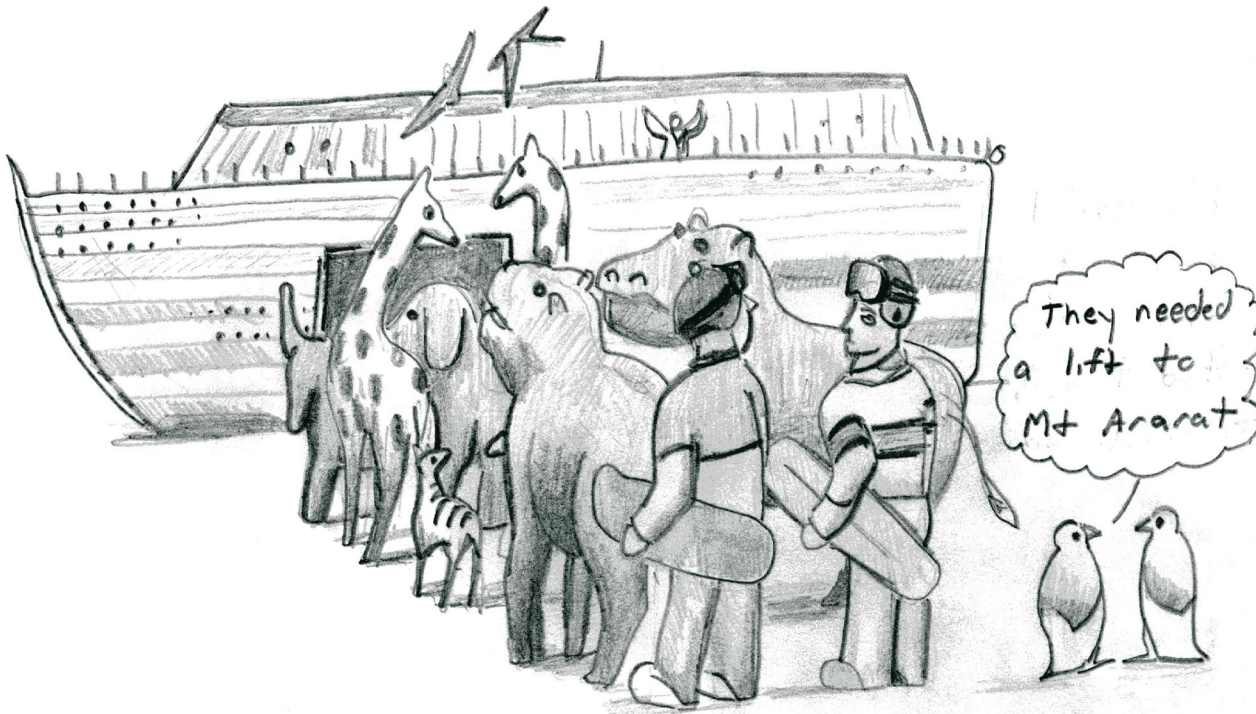
If you want to become a master patroller, that also exists and is a journey all in itself. Our first step is to become an Alpine or Nordic Patroller. In other words, become proficient in OEC, Skiing, and Toboggan handling. Then after mastering that level we can tackle the Senior Alpine or Nordic Patroller where the standards are a bit crisper on a bit more challenging slope with a few more obstacles to hurdle. By continuing your journey we can approach the Certified Classification. This one requires a certain level of knowledge and skills in Avalanche, MTR, Mountain Operations, Lift Evacuation, Low Angle Rescue, etc., etc. in addition to OEC, skiing, and toboggan handling.

As I relate this back to the owner's conversation, if we all were on a journey in the "Pursuit of Excellence", then our owners/managers could be reassured that we are on the same path with them to be all we can be. That brings increasing value to them. We are all on a journey throughout life; some in a career, some in raising a family, yet others in volunteerism as a patroller, scout leader, community leadership, etc.. Whatever your journey; striving for excellence in whatever we do brings value to those we serve, the gratification that we have accomplished new heights or milestones that

we have set for ourselves, or the self preparation that you may need to call upon in an emergency. Think about your journey and then set the “standard of excellence” and reach for the stars.

Jim Woodrum  
National Board Member

## Kasten’s Korner



Copyright 2013 Gary Kasten

# Culture of Excellence



**Linda Murphy  
Jacobs**  
Retiring ADD

Over the years that I have served as Assistant Division Director I have had the opportunity to interact with many different patrols, from some of the largest to some of the smallest. I have noticed that some patrols develop a culture of excellence, while others don't. A culture of excellence, when generated within a group, promotes the growth and performance of its members. There is an expectation of “stepping up” and moving forward in leadership, education and skills development. This type of culture is exponentially greater than its individuals because it is a group endeavor. These patrols continually support, push and pull their members to learn more, lead more and contribute more.

Within patrols who embrace a culture of excellence there is an expectation of finding solutions instead of focusing on problems. The focus is on “How we can” vs. “why we can't”. Both types of thinking can be contagious within a group. For instance a group of patrollers can sit around and complain about new policy or changes in practice (or even the weather). We pretty much know that no matter how much we complain, no change will occur without a focused plan. The best you can hope for is a bunch of grumpy people generating negative thoughts. Take that same group of creative minds, define the needs based on goals and out-

comes desired and suddenly forward momentum starts and positive growth begins. That same group then holds each other up throughout the process.

In our organization we have experienced changes in recent years. Life brings changes. Adapting and growing is a sign of a healthy organization, as long as the changes are based on need. Relying on “this is the way we have always done this” is pretty much what happened to the dinosaurs. Many of the problems that have faced our organization in the last decade revolve around changes in our structure and our programs. Allowing individuals to express differences of opinion is fundamental to a member oriented organization. However no one need tolerate rude and disrespectful behavior between member when disagreements occur. We are better than that and we should hold behavioral expectation of all of our associates at a high level, from candidates to national leaders. At the heart of our differences is that we all want the best NSP that we can get. Our approaches might be from different directions, but by maintaining respect for all as we work through the differences we should be able to find common ground and common direction. Be kind to yourselves, be kind to each other.

My last task as retiring ADD is to introduce my replacement. This individual needs no introduction. Don Loerch has been our Skills Development Supervisor for the past few years. He brings tremendous organizational ability, an in depth understanding of our programs and a quiet passion for patrolling to the position. He has a proven track record of being able to herd cats and to get the job done. It will be a pleasure to step to the side and watch as our new wave of leaders takes us forward. Thank you all for the opportunity to serve with the last few leadership teams. My life is much richer for having experienced this ride!

## Skills Development to Assistant DD



**Don Loerch**  
**Division**  
**Incoming ADD**

Greetings fellow patrollers, I'm hoping this issue finds everyone without a snow shovel nearby. This last winter was definitely a good one for our industry but, may have tested our patience just a little in May.....

As we all share the pure love of sliding, it's always a surprise at how the winter seasons slip by in a blur over and over again. I guess there's a bit of truth in just how fast time passes when we're having fun. Speaking of the blurrrrr, last season was my final as your CD Skills Development supervisor. Looking back I've made many friends previously unimagined. As well, I've enjoyed taking part in our shared journey as patrollers and friends. I continue to be in awe of the wonderful individuals that make our division one of the best in the country.

With all that said, I'd like to take this opportunity to thank you the members for supporting our Central Division training programs in the recent past. I hope you'll continue to do so going forward. Speaking of going forward, this is the perfect opportunity to introduce my replacement, Mike Vaerewyck. Not only is Mike one of the nicest people I know but, he also brings with him a great depth of NSP experience and service to our fine organization. If you have a chance, please reach out and welcome Mike to his new role. We're very fortunate to have him as a member of the new supervisor staff.

In closing, thank you again for welcoming our whole team into your lives over the past 5 years plus, warm wishes for the best summer ever...

## With Tradition Comes Responsibility

Not sure who said this first but it certainly holds true with the National Ski Patrol and synonymously the Central Division. What has been laid out before even most of us had a pair of skis on is a foundation of tradition that is firmly rooted in leadership and hard work. With each new leadership role, although unwritten, it is understood that the responsibility to carry on with the established policies and procedures is paramount. It is also the responsibility to continue to constantly improve individually as a patroller. In doing so our system improves on its own.



**Tom Anderson**  
Returning ADD

As we enter a new chapter in Central Division leadership and new supervisor roles I will look for this tradition to continue. And knowing (and getting to know) most of the new team I am sure they are up to the task.

Please seek out those that have been asked to carry on this tradition. Offer your encouragement, your support and most of all thank them for doing so.

## Many New Faces



**Chris Raudabaugh**  
Incoming ADD

Starting the 2013-14 season, you will see many new faces and names in ranks of the Central Division staff that will be delivering NSP education to you and the rest of the division. I'm not necessarily a 'new face' to everyone, but I am assuming a new role as Assistant Division Director (ADD) reporting to John Thomas. Here is a little history about myself...

I started my patrolling career in 1977 at the Valley High Ski Area (currently known as Mad River Mountain Ski Resort), which is still my home ski patrol today. I spent many years being a dedicated member of the patrol, fulfilling my duty shifts and pulling those sleds. Starting in the mid-1990's, I became more involved in NSP programs which lead to serving as a Patrol Director and Region Director. I have attained my Senior Alpine Classification in both skiing and snowboarding, I most recently fulfilled the requirements for Certified Patroller. During this time I have filled NSP Educator/Training roles including Toboggan Instructor, Instructor Trainer, OEC Instructor, Instructor Development Instructor and Senior Trainer/Evaluator (Ski, Snowboard, Toboggan, and Senior OEC). I currently hold level 2 certifications in PSIA (skiing) and AASI (snowboarding).

In my role as ADD, I will be supporting the Ski School, PSIA Liaison, Avalanche, Certified, Safety Team, and Webmaster advisors/supervisors. I look forward to my new role, and more importantly, working with all of my Central Division fellow patrollers.

## Incoming New RD's and Staff Members

### **Western Region Director**

Jeannine Mogan  
Certified Patroller  
Many Years patrolling  
Three Rivers Ski Patrol

### **Registration Supervisor**

Dean Brandt  
Alpine Senior Patroller  
26 Years patrolling  
Welch Village Ski Patrol

### **Senior Program Supervisor**

Daren Lukes  
Alpine Senior Patroller  
13 Years patrolling  
Granite Peak Ski Patrol

### **Eastern Michigan Director**

Michael Schons

16 Years patrolling  
Pine Knob

### **Certified Program Supervisor**

Patrick Perlman  
Certified Patroller  
29 Years patrolling  
Wilmot Mountain

### **Central Division Ski School Supervisor**

John Keating  
Certified Patroller  
26 Years patrolling  
Marquette Mountain Ski Patrol

# Incoming New RD's and Staff Members Continued

## **Patroller 101 Supervisor**

Vicki Zierden  
Alpine Patroller  
10 Years patrolling  
Three Rivers Ski Patrol

## **Avalanche Supervisor**

Derek Werner  
Certified Patroller, National Appointment  
18 Years patrolling  
Pine Knob Ski Patrol

## **Alumni Supervisor**

Lee Stotesbery

Ski Patrol

## **Toboggan / Transportation Supervisor**

David Bramel  
Alpine Senior  
10 Years patrolling  
Afton Alps Ski Patrol

## **Central Division Webmaster**

Kent J Anderson  
Alpine Senior Patroller  
5 Years patrolling  
Afton Alps Ski Patrol

## **Skills Development Supervisor**

Mike Vaerewyck  
Alpine Certified Patroller  
30 Years patrolling  
Swiss Valley

## **Assistant Skills Development Supervisor**

Harold E Park II  
Alpine Senior Patroller  
5 Years patrolling  
Perfect North Slopes Ski Patrol

## **Central Division Administrative Assistant**

Cheryl Raudabaugh  
National Appointment 8391  
17 Years patrolling  
Mad River Mountain Ski Patrol

## **Assistant OEC Supervisor**

Debra Allison  
Alpine Senior Patroller  
19 Years patrolling  
Chestnut Mountain Ski Patrol

## **Assistant OEC Supervisor**

Rose DeJarnette

Ohio Region

# Region Reports

## North Central Region



**Les Robinson**  
**North Central Region**  
**Director**

Well here we are 168 days until the opening day for Granite Peak probably somewhat less for some of our other hills in NC Region. We had nice long season up here this year with one resort opening in early November and staying open until the end of April if you count that is nearly six months.

We had a very good training year this year, with a some success for senior on SEM side and on ski side, also the region put on a very good TES, IT recert, STW, and senior clinic at Ski Brule again this year. This will again happen this next winter the event is being moved but the quality and quantity will remain LARGE.

We are hosting the Central Division fall meeting and awards banquet this fall look for the information in the newsletter and come on up to Wausau this fall.

Now is the time to get out do some hiking, biking, running, walking, weight training, yoga, kayaking, anything to keep in skiing shape and improve your skiing shape. Also if you are interested in becoming instructor volunteer to help your OEC team as they are probably starting to work on the 2013 refresher plans and new class plans.

Have a great summer.



# Ohio Region

**Bill Currier**  
**Ohio Region**  
**Director**

Summer is here; Region Banquet, Patrol Banquets and other post-season events are complete, and Ohio Patrollers are now golfing, biking, hiking, planning vacations, etc. Ski Patrol – what is that?? However, some of us poor ‘smucks’, i.e. PR’s, Region Staff, and the RD of course, continue to stay abreast of what’s happening, planning for the next season, and looking forward to the Division meeting in Sept. ‘No rest for the weary’ as the saying goes.

Due to continuing cold weather and snow in March, some Ohio Region ski areas remained open throughout the month while others closed early. In fact the Brandywine Ski Area, which was open on Mar. 3, the day of the SROEC test, closed the following week, and re-opened two weeks later for a final day of fun on the slopes. What a difference a year makes!

We held our annual Spring Meeting and Awards Banquet at Mad River Mountain on April 27. Thanks to all who participated and congratulations to the award winners.

Thanks also to all who participated in our programs this season, and a special thanks to all Region staff, instructors, trainers, evaluators, advocates, et al, who volunteered countless hours and traveled countless miles to conduct our programs. I’m continually amazed by the commitment of all the staff (more than 100) that it takes to conduct the Senior Tests. As I told Dave Baumlein at the SROEC test, we could start a new large Alpine patrol in the Ohio Region with this number of volunteers and call it ‘Mount Senior’. A special thanks goes out to the management and patrol leadership at BMBW who hosted both senior tests, an STW, a SES/SNES and a TES this season.

All events scheduled at Clear Fork were canceled due to the fact that area management were unable to provide insurance coverage for volunteer patrollers. Our new Ski School Advisor, Matt Kim, and our new OET Advisor, Rich McNitt, did an awesome job in conducting the SES/SNES and TES events this season.

Several region staff members are stepping down from their positions and will be recognized at the Awards Banquet. New advisors and assistant advisors who have joined the Region Staff and will also be recognized at the Awards Banquet. Ohio Region patrollers who will become members of the Central Division staff as of July 1 include:

- Sandi Hammons, PNS, continues as Women’s Seminar Supervisor
- Rose Dejarnette, PNS, will be an Assistant OEC Supervisor
- Chris Raudabaugh, MRM, will be one of the new ADDs
- Dan Moss, MRM, will be the PSIA Liason
- Cheryl Raudabaugh, MRM, will be the Administrative Assistant

Retiring Division Staff members from the Ohio Region include:

- Dale Mihuta (PNS), Avalanche Supervisor
- Frank Cleary (PNS), Administrative Assistant
- Tom Worley (PNS), OET Supervisor

Ohio Region patrollers serving at the National level include:

- Janet Glaeser, BMBW, National Board Member
- Jim Woodrum, PNS, National Board Member
- Darcy Hanley, PNS, Education Director and recently appointed NSP Managing Director
- Jay Zedak, BMBW, OET Program Director
- Rick King, PNS, MTR Director

Here are a few highlights of the past season:

- 822 patrollers were registered in December.
- 9 candidates, 2 of whom became full Senior Alpine patrollers, completed the Senior S&T Test on Feb. 23-24. 6/7 candidates passed skiing; 7/9 passed Toboggan and 100% of snowboard candidates passed riding and Toboggan
- 12 candidates successfully completed the SROEC Test on March 3 at Brandywine. Also, 6 successfully completed the Aid Room Module. All candidates successfully completed both tests. Congratulations for that record achievement.
- Other events included:
  - o A Division S&T Clinic held at Boyne Highlands in December with about 25 Ohio Region



## Southern Region



**Don Steen**  
Southern Region  
Director

I'm sitting at Chestnut Mountain Resort right now on May 18th and there is still snow on Blackhawk and Old Main. The season was slow to start, but then Mother Nature decided not to let it end.

Special Thanks to all instructors, trainers, evaluators, advocates, family members and region staff who volunteered countless hours and miles to make this season a success. I would like to also extend my thanks to Jim Woodrum who QA'd the Senior Alpine Evaluation at Chestnut and Dayle Hadden who QA'd the Senior OEC Evaluation at Swiss Valley and Joe Riley who QA'd the Senior OEC Evaluation at Sundown.

I had an enjoyable, but busy first season as Southern Region Director. Some of my memorable moments from this year include:

- Hosting the Central Division Fall Meeting.
- Attending 11 of the 14 Region Refreshers
- Visiting all 14 Alpine and 2 of 3 Nordic patrols in my Region.
- Attending the MSAA Meeting at Boyne Highlands.
- Meeting and skiing with lots of patrollers from my region.

Section Chief Elections were held in Section 2 & 5. Please join me in congratulating our new Section 5 Section Chief Roger Barr and our second term Section 2 Section Chief Brett Duesdieker.

I would like to Thank all of those joined me at this years Southern Region Spring Meeting and Awards Banquet in Altoona, IA. I would like to extend my congratulations to all award recipients. These very deserving patroller received awards from service awards, certificates of appreciation, Southern Crosses, Yellow Merit, Outstandings, Critical Care, up to a National Appointment.

I hope everyone has an enjoyable summer. Looking forward to seeing you all at the Division Fall Meeting in Wausau on September 5-8th.

## Western Michigan Region



**Dave Johnson**  
Western Michigan  
Region Director

Another season in the books. It was a good season with skier visits up Region wide. We were able to conduct two TESs and one SES. This year we only had one Senior hill candidate so instead of holding our own test Northern Michigan was kind enough to let us send him to their test. He passed the Ski portion. Thank you Northern Michigan. The Senior SEM Evaluation was held on at Cannonsburg. We had 12 patrollers that participated and had 4 complete it. This evaluation resulted in two new Senior Patrollers. The Nordic evaluation was held at Crystal Mountain this year. We gained one new Nordic Patroller and two new Nordic Seniors. Elections were held in Section II and the new Section Chief is Kevin Barrons. The Region held a Women's Clinic at Caberfae Peaks, which was a great success. Cannonsburg again ended the Season with a Torch Parade honoring all the patrollers and former patrollers that have passed away. A very moving experience for all whom attended. Our Awards Banquet was held on May 4 at Cannonsburg Ski Area. Everyone had a great time with delicious food and many deserving patrollers were recognized. Hope everyone has a great summer and looking forward to next season.

### The Daniel Somalski Memorial Fund



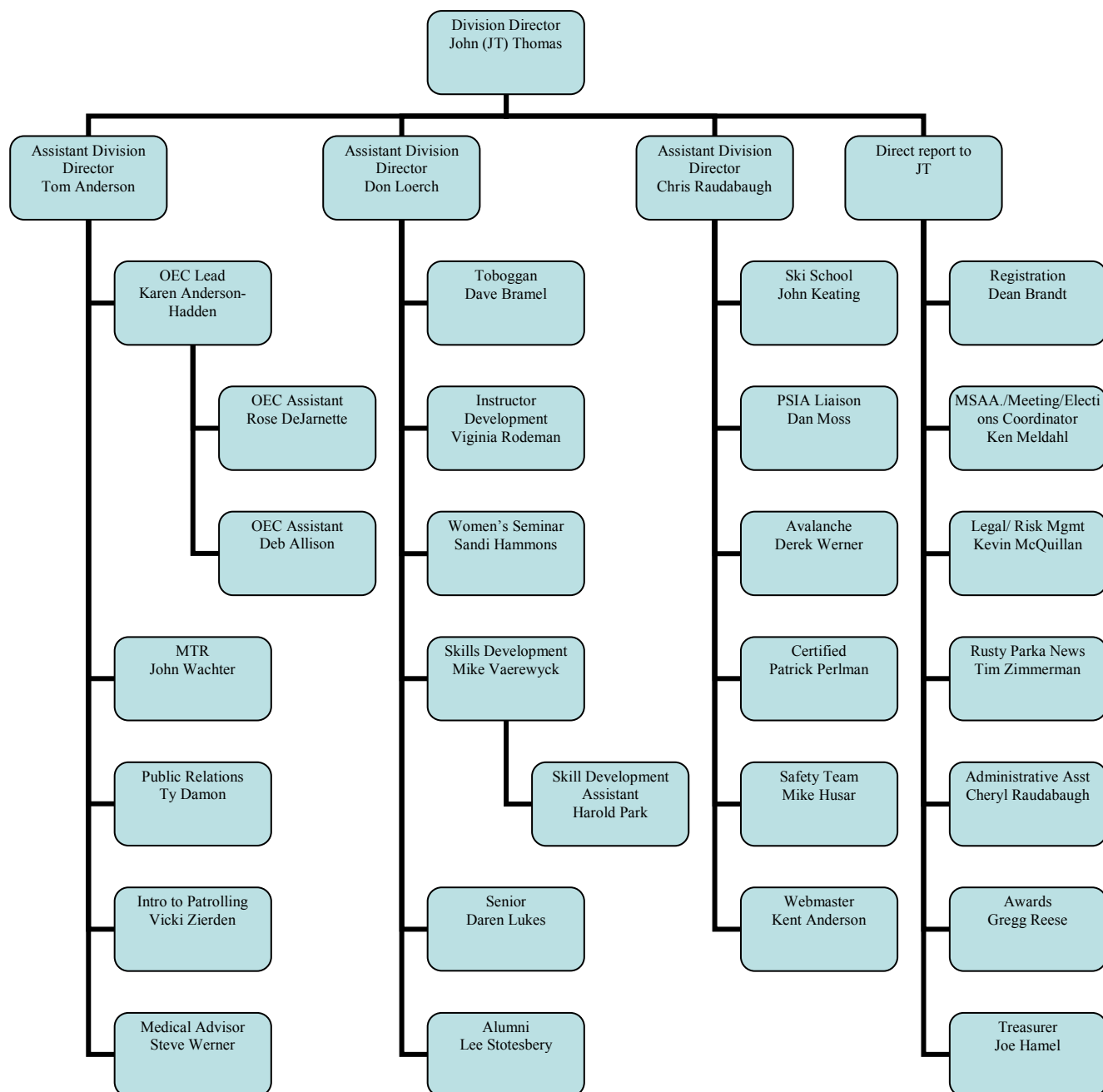
Our *Central Division* is proud to announce the formation of a memorial fund honoring a very special friend and patroller. Dan, as many of us know, dedicated much of his 25 year patrol career to helping others attain their goals both on and off the slopes. As a long time "Certified" patroller #426 and a "PSIA level 3" he was a force to be reckoned with both inside and outside of the traces. It is in memory of Dan's example that his fund will sponsor an annual award to a current or aspiring NSP alpine trainer. In accordance with his family's wishes, the annual monetary award will be tailored to assist a worthy patroller in pursuit of their chosen alpine credential(s).

Please consider donating to this important fund just as many have already. By contributing you'll advance the goals of our organization and promote Dan's legacy. Visit [www.nspcentral.org](http://www.nspcentral.org) to donate on-line or contact [dloerch@sbcglobal.net](mailto:dloerch@sbcglobal.net) for more information.

# 2013 - 2014 Central Division Organizational Chart

## Supervisors and Staff

*Staff Roster Pg. 26 Will Feature 2013 - 2014 Personnel in Fall RPN Edition*



## National Board Members from Central Division

**Janet Glaeser**  
Term expires 12/31/2015  
Janet7409@cox.net



**Jim Woodrum**  
Term expires 12/31/2015  
jrwoodrum@centurytel.net  
5151 South Lake Shore Drive  
Cedar, MI 49621  
231-228-2277

# OEC Updates: Karen Haden



**Karen Haden**  
**Division OEC**  
**Supervisor**

For many of us in the OEC world, our jobs never really end. As we gear up for the coming OEC course and refresher season, please accept my sincere thanks to all of the OEC Instructors and OEC Instructor Trainers for the outstanding jobs they do. The OEC program is truly blessed in the Central Division. I'm one lucky lady to be part of an OUTSTANDING team.

We are currently busy holding the first Senior OEC Trainers/Evaluator's certification clinics around the division. Our first goal is to get the Region OEC Administrators and Region Senior OEC Coordinators certified so they can bring the clinic to their region staff. Region Senior Trainers and Evaluators; look for more information in the near future.

Just as our seasons change so to, does our leadership team change. Effective July 1, we will have two new Division Assistant OEC Supervisors. Please join me as I welcome Deb Allison from Southern Region and Rose DeJarnette from Ohio Region. They bring a wealth of knowledge and experience to their new positions. Rose's email is [r.dejarnette@gmail.com](mailto:r.dejarnette@gmail.com) and Deb's email is [Debra.Allison@windstream.com](mailto:Debra.Allison@windstream.com)

Also welcome our new Region OEC Administrators: Kim Zambole (Southern), Laura Scott (Ohio) and Maureen (Moe) Minor (South Central). They join Dan Goldberger (Western Michigan), Dave Voelker (North Central), Don Smith (Northern) and Rae Ann Ruddy (Eastern).

As always feel free to contact me with questions/concerns or if you just want to chat, at [karenhadden21@gmail.com](mailto:karenhadden21@gmail.com) or via cell 269.492.4025.

Enjoy your summer.

# OEC Updates: Kathy Glynn



**Kathy Glynn**  
**Division Assistant**  
**OEC Supervisor**

Thank you to all the OEC instructors and OEC Instructor Trainers for everything you do.

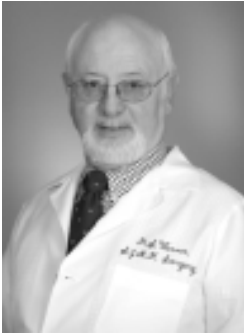
This will be my last submission to the Rusty Parka newsletter. It is with mixed emotions that I say good-bye as your Assistant Division OEC Supervisor. While the job has had its challenges, it has also been very rewarding. When I took this position in 2009, I wasn't exactly sure what I was getting into. With help and guidance from Karen Hadden and my dear friend and mentor Deb Endly; I gained knowledge and insight, and we became a team, with one goal. Working so closely together over the next few years, not only did I gain a new found admiration for Karen and the job she does, but I gained a cherished friendship.

From the very first day of my OEC class, Deb has been a solid and positive presence in my life; both in patrolling and my personal life. I can't think of a better friend and mentor. Through Deb, I have had the opportunity to be involved in a variety of Division and National OEC projects. Some with tight deadlines and a little bit of stress, but all proved to be richly rewarding. I keep telling her, one of these days, I will learn to say 'no'; just kidding Deb. I will continue to serve on the National OEC Practical Final Evaluation team and the National Scenario Committee.

Through the years, one thing that remained clear -our continued goal was to provide quality OEC programs and training to our patrollers. By providing quality programs and training, we provide exceptional care for our patients. After all, that's why we are all patrollers.

Happy Summer

# Medical Stats from Stephen Werner MD



**Stephen Werner  
MD  
Division  
Medical  
Supervisor**

I'm back, and pleased to report that your new Division Director has reappointed me as your Division Medical Advisor. For those of you who do not know me, I am an orthopedic hand surgeon practicing in Southeast Michigan. I have just finished my 25th season as a patroller. I patrol on alpine equipment, and sometimes on a snowboard, at Pine Knob Ski Area in Eastern Michigan Region. During this time, I served our area as Patrol Director for six years, and served as Assistant Region Director for a short while. I especially enjoyed serving as co-instructor of record, together with my late wife Karen, for our annual OEC course for ten years.

My responsibilities as Division Medical Advisor include service on the National Medical Committee., which was called into service for the roll out of the fifth edition of our OEC manual. More of my time has been serving as a consultant to the Division Awards Advisor, and to the OEC program. I am happy to receive questions or comments from any patroller in the Central Division at my e-mail address, [steve.werner@usa.net](mailto:steve.werner@usa.net), or by texting to 248 408-4313.

During my patrolling career, I have been passionate about the OEC program, participating as an instructor, examiner, and instructor of record for numerous courses and refreshers. It

has been my privilege to provide quality assurance analysis at numerous senior and certified OEC evaluations. To my disappointment, I have seen well trained and qualified candidates not succeed at the final evaluation, sometimes due to controversial examining. My fear is that senior candidates, and their trainers, will lose enthusiasm for the program, and that would hurt all of us. Hopefully, all of us committed to the OEC program can work toward more consistency and fairness in the evaluation process. I know some change is in the works already, but it may not be enough. I'd be happy to hear your thoughts.

## 2013 Election Results



**Ken Meldahl  
Division  
Elections  
Supervisor**

Central Division held three elections this past season with all of them being uncontested. On July 1st, John Thomas from Western Region and Western's Region Director will be our new Division Director with 58% of the votes cast. John has been a member of the NSP since 1981 and patrols at Welch Village. Jeannine Mogan has been appointed Western's Region Director to fulfill the remainder of John's Region Director Term.

Eastern Michigan with 72% of votes cast has elected Michael Schons as their new Region Director. Mike started patrolling in 1997 and comes from Pine Knob Patrol.

South Central Region held a "one member, one vote" method of voting and with 29% of ballots cast has elected Joe Riley as their Region Director. Joe, also a member since 1997, is a member of the Cascade Mountain Patrol.

I congratulate each new Director and wish you the best in your new positions. I also wish to thank Past Directors Jim Woodrum and Derek Werner for their service to the Central Division.

Next season, 2013-2014, Region Director Elections will be held in Ohio, Western Michigan and Western Regions. Nominations will be accepted following the Fall Rusty Parka News publication.

## The End is Near

June 30th marks the end of our fiscal 2012-13 and the start of completing our Division consolidated financial report. It starts at the individual patrol and ends with filing the Division's IRS 990 report. These are two important dates:

- September 1st-Region consolidated Reports' due to Central Division Director and Treasurer.



**Joe Hamel**  
Division  
Treasurer

- November 15th-Central Division IRS 990 report filing

Region Directors and Treasures don't miss this date: If your Consolidated Report is not received by October 1st, it will result in the loss of your Region's support funds. Reconsideration for waiving or alternate penalty will require a two-thirds approval of the Central Division Board. (See Central Division Policy and Procedures Chapter 5)

Missing the November 15th date requires filing for an extension and added expenses. Hopefully this will mark the 3rd year we have filed on time.

Have a wonderful summer.

## Toboggan Stuff



**Tom Worley**  
Division  
Toboggan  
Supervisor

We had a great ski season that just did not want to quit. Many of us got to see some late storm activity that literally caught us off guard. The really good thing was additional time on the slopes.

### **TOBOGGAN INSTRUCTOR TRAINERS (IT)**

With the season well behind us, we need to be thinking about what we did and what we need to do to actually finish our season completely. What does that mean? Well simply speaking, we need to be finishing all of our responsibilities as IT's.

- Make sure that we have closed out any courses we opened, i.e. TES, TREF, etc.
- Complete and send to your Region Toboggan Supv. your season toboggan training log\*
- Compare your "Planned" training activities to the actual "Completed" activities for 2014

\*If you are an IT you must send your season's training activities or you will not be reappointed.

### **TOBOGGAN IT RECERTIFICATION**

Every Toboggan IT needs to re-certify once every three years. That does not mean simply attend a Division STW once every three years. Every toboggan IT must participate in their Region's IT recertification program. Your Region Toboggan Supervisor will make sure that you are

given an opportunity to take part in these annually generated day long programs. This is also a mandatory requirement to sustain your IT status.

### **TOBOGGAN INSTRUCTORS**

Every toboggan instructor (TI) is required to attend one Region STW at least once every three seasons. The whole purpose of this requirement is that without the opportunity to share time with other TI's and IT's you typically do not get any new input into your toboggan instruction practices.

Every patrol needs at least 8-10 toboggan instructors. If you are interested in becoming a toboggan instructor contact your Patrol Representative and advise him/her of your interest and what you need to do to become one. If that is not successful, then contact you Region Toboggan Supervisor and obtain guidance and assistance from there.

### **PATROL REPRESENTATIVES**

Every patrol in the Central Division is supposed to have at least one Toboggan IT assigned to that patrol. You may well have 15 or more but the minimum is at least one. If you want and need more toboggan training, your local area IT is there to provide your guidance. If that isn't happening and you need more help, contact your Region Toboggan Supervisor for help.

As it currently stands, the Central Division has a goal of one (1) toboggan instructor for every ten (10) on the hill patrollers and one (1) IT for every five (5) IT's on your patrol. Simply put, if you have 100 on the hill patrollers you should have at least 8-10 toboggan instructors and at least 1-2 toboggan IT's. If you don't and you want more toboggan support contact you Region Toboggan Supervisor for more instructors and IT's.

### **ALL TOBOGGAN INSTRUCTORS AND INSTRUCTOR TRAINERS**

Your role as a toboggan instructor or instructor trainer is training toboggan handling. This is a non paying NSP job (of

course you do get an enormous physic income for a job well done). You are in these positions to help others learn a very valuable and important skill, toboggan handling. This is the primary way that we bring injured guests down off the hill to our aid station. Your role is crucial. You are teaching our members how to make our services function smoothly and efficiently.

Every “on the hill jacketed patroller” is required to take a toboggan handling refresher every year. This is another one of your job responsibilities. If you do your job we are more likely to provide the services that our area’s injured guests want and need. Make sure that you fulfill this jobs’ responsibilities.

### **NEW CENTRAL DIVISION TOBOGGAN SUPERVISOR**

Please extend you helping hand out to the new Central Division Toboggan/Transportation Supervisor:

Dave Bramel  
Afton Alps  
Western Region

I am sure that Dave will be contacting you with numerous opportunities to help out. Please get involved and help keep Central the strong group of toboggan handlers that we are. I am certain that will continue under Dave’s leadership.

It has been my pleasure to serve as the Central Division Toboggan/Transportation Supervisor for the past 9 years. I have enjoyed the incredible support from so many and I strongly recommend that Dave be provided the same support and enthusiasm that you have given me.

Respectfully submitted,  
Tom Worley

## **Instructor Development Delivery**



**Virginia Rodeman  
Division Instruc-  
tor Development  
Supervisor**

How many ways do you know to stop bleeding, to scale a fish, or to tell a story? There are a number of ways to take an Instructor Development class, also. One way is to attend a traditional class of approximately 8 hours, another is to complete the on-line component of the ID and a face-to-face component, and still another is a blend of the traditional and some required pre-class assignments (it cuts the traditional class to about 5.5 classroom hours).

The traditional class is often a full day or two evenings. Your instructor will ask you to read the book *Training Patrollers Effectively* before class. This will prepare you for some of the focus of the day. In class, you will complete activities and end with writing and presenting your six- pack. Look for an ID class in the course calendar.

The On-line (IDEC) version provides the didactic work you are still held responsible to read the book and complete some interactive work. After you complete the on line course, you will receive a certificate which you take to the face to face class with your already completed 6-pack lesson. Here any question you may have will be answered and you will present your 6-pack to the class.

You will want to check the calendar to see when the next scheduled IDEC (face to face part) is available.

The third option is presented as a one-day class. Your instructor will ask you to read the book and provide some activities for you to complete before the classroom setting. You will bring these with you to class. In class there are more activities and you will end with writing and presenting a 6-pack to the class.

This is the first step in becoming a NSP Instructor. Whichever you decide fits you best will achieve the same result someone ready to be mentored in a NSP discipline. If I can be of service to you, please feel free to contact me at [rode-woman@yahoo.com](mailto:rode-woman@yahoo.com)

## **The Birkie**

Giant Skis are 25-foot long planks with upturned tips (the tips are on hinges, to make storage easier) and 6 pairs of snowshoe bindings. A race on these things is something like a 3-legged race, but with 6 people; the goal is not to fall



**Peter Wollan**  
Division  
Nordic Supervisor

over, and only secondarily to go reasonably fast. Julie organized a Ski Patrol team this year, and we did ok -- we didn't fall over, and we even won our heat.

The Giant Ski race is part of the pre-Birkie festivities, taking place on Hayward's main street. There are a bunch of these carnival-like events in the days leading up to the Saturday race. Ski Patrol participated in the Family Fun race, the Sit-ski race, the BarnaBirkie (kids), and the Bar-kiBirkie (dogs). And on Saturday, we did what we had really come for, patrolling the American Birkebeiner and supporting the 10,000 racers in the Wisconsin woods.

The Birkie is the central event in the Division's Nordic ski calendar. Patrollers come from every Nordic patrol west of Lake Michigan, and a good proportion of the Alpine patrols, too -- we miss some of the eastern and southern patrols, because, let's face it, Hayward is a long ways from Ohio. Most of us ski a 25K portion of the trail, but there are some non-skiing duties as well. If you'd like to join us, consider coming a day or two early and helping out with other events as well as the main race. It helps to be a Nordic skier, of course, and it's nice if you have a friend with a cabin in the area. But there is floor space to sleep on, and the food is always good.

The Birkie weekend is an opportunity to see friends we don't see often, catch up on gossip, and even discuss NSP policies. It draws us together. Patrolling the race itself is always satisfying and fun. And next year our Giant Ski team will try to ski a bit faster, as well as not falling over.



The NSP entry for the 2013 Birkie Giant Ski race gets strapped in. Right to left: Vera, Kathy, Julie, Jeff, Peter, and Andy.

## Making Our Tracks Count



**Sandi Hammons**  
Division Women's  
Seminar  
Supervisor

Linda Barthel, our Women's National Program Supervisor and other women in leadership roles in the NSP will host a talk about at the Division Meeting on Saturday, September 7th for 1-4pm.

Ladies, please join us in our discussions to encourage more women to aspire to leadership roles. We will be sharing experiences and we want to hear from you and how we might encourage you or some one you know to step up. We all have something to offer each other. Sometimes we all just need a little boost up to make your tracks count.

# Central Division Certified Program

By: Patrick Perlman  
Incoming Certified Supervisor

Thank you to Mike Longfellow-Jones for leading this program for the past eight seasons. My name is Patrick Perlman and my home area is Wilmot Mountain. I have been a patroller for twenty-nine years and a Certified patroller for the past sixteen years.

This past season there were six qualification and/or recertification clinics throughout the division. Six new candidates were accepted into the program. The certified evaluation was held as joint venue between Nubs Nob and Boyne Highlands. Twelve candidates, forty-eight staff members and numerous supporters participated in the event. Bill Somers the assistant national Certified program advisor from Pajarito Mountain in New Mexico was also present to observe our event. Chris Raudabaugh of Mad River Mountain completed all of the components of Certified and has been presented with Certified #760.



Late Friday afternoon we were able to participate in Dan's last run. It was an awesome sight to see that many NSP members honor Dan.

Next seasons annual evaluation is scheduled for February 27th through March 2nd at Marquette Mountain. Qualification and recertification clinics will be scheduled throughout the division as well.

Progress continues to be made on the National study guide. Plans are also in place to expand the program into the divisions that currently do not have a program.

If you have any questions about the Certified program please feel free to contact me or any of the region advisors.

## Busy 2013 Season Comes to Fitting End



**John Wachter**  
Division MTR  
Supervisor

Anyone who knows me knows I like to be outdoors getting away from it all with a group of friends. Well on Easter I found myself in a spot I never dreamed. I was on the back side of the Annex at Hidden Valley overlooking the ski hill. With the sun coming up and the grass showing through the snow on this crisp morning. We gathered by a fire and sat down for wonderful Easter service lead by Tim Clark of Hidden valley.

For a moment I want you to imagine crawling into a small barrel just big enough to fit in as you grab a plywood lid with a handle on it to close the opening up. The next thing you hear is a skid steer and shovels covering the rest of your little chamber with a little snow.. ....



Well this was the case the other day for a couple of lucky/ unlucky people that volunteered for the Eureka k-9 search and rescue team. This gave us a nice opportunity to see how these dogs work and performed in the snow. A special thanks to Eureka k-9 unit for leading a great discussion on how the dogs track and how we should interact with them as they are working. It was pretty unique and very informative.







How many times have we had someone come up to us on the sloops asking for help finding a significant other? Has the person left, leaving you not knowing if the significant other was found or not? Do you feel like you are able to handle this ok? What if you can not find them right away? We had a great scenario play out during our course at Hidden valley. A couple was skiing together and the one stopped to use the restroom. When he came back out the hill was closing and his partner was no were to be found. The group immediately picked a hill caption and a scribe. Taking down all the information, they started setting up an incident command system. Starting with a bastard search (checking bathrooms, car, bar, ski shop) without any success. We then started expanding our efforts and search technique. Slowly building and adding on to the incident command structure as needed.

Thank you to Brian Rull and the new MTR instructors of the Southern region for pulling this all together. (Brian Rull, Julie Stone and Gene Walker.....Congrats.) (and GM-Bill)

The weekend of May 11 an MTR I was held up at the Sand Dunes wilderness area in Minnesota. It was hard to believe the weather we had for this time of year, good or bad. I felt we were very fortunate to wake up to temps down below thirty and we even had snow flurries, great planning Wrick .

I liked the way Wrick chose to present the ten essentials. As many of you know Wrick is just getting going as our Western Region Advisor and feel that he will do a great job. Now If you want to see what I am talking about you'll have to check out his courses. Like always in these courses there were some great people from different back grounds to share their stories and ideas.

We like to do a section on " emergency shelters" . With out going into much detail I want you to think about a couple key points for your shelter. Is it light? Easy to carry? Fast to set up? Easily seen by others when set up? How long do you need to stay in it? How many people will it hold? What do you need to carry with you in order to set it up? I want you to keep these things in mind the next time you go out in the back country.

We were very fortunate to have Hahn's with the Minnesota DNR join us. He is from central New York which is a beautiful area I have been to on several occasions. Hahn's was around when some of the original search and rescue (SAR) manual was written and put together. He was able to give us a really good segue into our evening by leading the discussion on search and rescue.

The sun was going down and we were all gathered around the fire when one of the instructors started looking for her twelve year old son Patrick. Sue Welsh came running over to the group to report that her son was missing. As always the first instinct is to help. We organized and assigned an incident commander and a scribe. We established when he was last seen and then started our search. I must say I think we planned this one out almost too well. Initially a couple of people thought that he was actually missing. Let's set the scene: The sun is setting, the temperature is dropping down into the thirties. We are in the middle of nowhere and a twelve year old is missing and not found anywhere around camp or in any of the vehicles. Knowing this information, we know we have to find him fast. We need to gather information on where he was last seen, what time, what he was wearing, medical conditions.....is he dressed ok for conditions, does he know the area? As we start the search it is still light enough to see. Do the rescue personnel have flash lights? Communications? Extra food, water , clothing, shelter if they were going to be out for a while? ( ten essentials). DO NOT forget you need to take care of yourself and maintain a level of comfort. If you get yourself in trouble who is going to save you? Did someone keep an eye on mom? Did she leave the scene to help look for him? I must say that the group did an excellent job of staying on task. There was a lot of variable's in this one. Special thanks to Sue Welsh and her son Patrick for helping out. No matter how many times you run these drills they never play out the same and you always walk away with something. I also want to welcome our new instructor from western region Sue Welch.



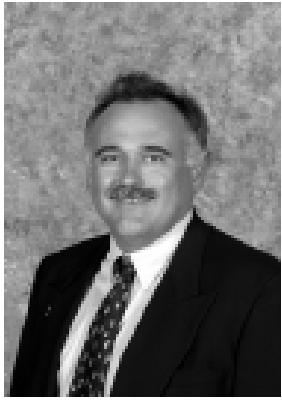
Dave Brandon from southern region had a nice turnout at the southern region banquet for the MTR awareness course he set up.

I know others have said it but, the ski patrol is like a big family. There is some great people out there that are a privilege to know. If you think the idea of being buried in the snow is for you or you feel like you are up for a little adventure, you might want to sign up for one of the courses in your area. You never know what will happen.

If you would like to get an MTR course going in your area please feel free to contact me rock\_ski@hotmail.com. If you can round up some friends and would like to have one held in your area let us know!

## **More MTR Photos Page 31**

# **NSPCentral.Org Updates**



**Chris Raudabaugh**  
**Retiring**  
**Webmaster**

The NSPCentral.org website completed another year of being a source of news and utility for the Central Division membership and staff. Our site is used to store Staff rosters, calendar of events, meeting minutes, policies and procedures, forms, and NSP skills/education related documents. It is also used for organization and registration for Central Division events.

This will be my last year as Central Division webmaster. When I took the job 5 years ago, my goal as webmaster was to make the site take some of the work load off of the shoulders of the Central Division Staff thru the use of online registrations and payments. I believe this was accomplished, and hope everyone found the site useful and convenient to use.

We have a new webmaster taking over! Kent Anderson, member of the Afton Alps Ski Patrol, has agreed to take the Webmaster position and continue keeping the site active and up to date. I look forward to the future developments that Kent has planned for our website.

## **Important Educational Opportunities!**

There are a number of important educational opportunities coming up for Central Division Patrollers

**Central Division Fall Meeting** in Wausau, WI September 6 - 8 , 2013. See Pages 20 - 24 **Register in Advance**  
**Low Angle Rescue / Toboggan Refresher** with National OET Director Jay Zedak!

**Certified Awareness Program**

**OEC Breakout Session**

**Women's Clinic Breakout Session**

**AHA CPR Refresher for Health Care Providers**

**Avalanche Fundamentals and Rescue**

**Make Up OEC Refreshers!**

**North Central Region**

**Minocqua Winter Park**

**Nov. 3, 2013**

**Pre-registration Required. Contact Betty Adams: mbadams008@gmail.com, 715-588-7731**

**Eastern Michigan Region**

**Pine Knob**

**Nov. 24, 2013**

**Contact Steve Werner steve.werner@usa.net in advance**

# National Ski Patrol Alumni

## What is an Alumni Member?

An Alumni member is a special registration category for people who, for various reasons, no longer provide emergency care or rescue service but wish to continue their involvement with the National Ski Patrol.

The NSP Alumni members started in 1977 to maintain contact with former members and keep them informed of national events and activities. Today the Alumni Members total more than 1,900.

## Why join the Alumni Members?

By joining as an Alumni Member, you can continue to be part of the largest winter rescue organization in the world. Better yet, your involvement provides you with the opportunity to support the national organization on a new level.

As an Alumni Member, you won't be required to fulfill any skill or educational requirements; however, depending on local needs and your experience, you might be asked to serve in an advisory capacity to local NSP units as an OEC instructor, for example, during annual refreshers.

Several areas in the nation have already taken advantage of their alumni's local knowledge and experience. A valued force within NSP, alumni members often attend ski patrol events, help recruit new members, provide administrative and IEC help, give safety talks, and participate in other community service activities.

## Other Benefits:

Alumni Members receive:

- A subscription to *Ski Patrol Magazine*
- Access to select NSP Winter Catalog merchandise
- The opportunity to participate in NSP-sponsored events
- Dues may be tax deductible

## How much does it cost?

Regular fee: Annual dues are just \$27 annually. The national organization receives \$17 and \$10 is returned to the division with which the Alumni Member is affiliated. Active patrollers who are members keep that status on becoming an Alumni Member.

Lifetime membership fee: Patrollers who wish to become an Alumni Member, as lifetime members, may do so for a one-time fee of \$700, which helps support the NSP endowment fund. They will receive a Lifetime Membership Pin and a framed Lifetime Certificate.

## How does one join the Alumni Members?

Fill out the application form and mail it with the membership fee to the National Ski Patrol, 133 South Van Gordon Street, Suite 100, Lakewood, CO 80228.

## National Ski Patrol Alumni Member Application Form

133 S. Van Gordon St., Suite 100, Lakewood, CO 80228

Phone 303-988-1111 Fax 303-988-3005 Email [nsp@nsp.org](mailto:nsp@nsp.org) Web site [www.nsp.org](http://www.nsp.org)



Name: \_\_\_\_\_

Address : \_\_\_\_\_ Phone: \_\_\_\_\_

City: \_\_\_\_\_ State: \_\_\_\_\_ Zip: \_\_\_\_\_

If registering as an Alumni Member please provide the registration number: \_\_\_\_\_

Amount enclosed: \$ \_\_\_\_\_ Regular member Lifetime member

### New Alumni Members Please Provide the Following Information:

Last NSP Affiliation: Ski Patrol: \_\_\_\_\_ Registration Number: \_\_\_\_\_

Region: \_\_\_\_\_ Division: \_\_\_\_\_ Last Year Registered: \_\_\_\_\_

Alpine Nordic NSP Appointment number : \_\_\_\_\_

If you wish to associate with a ski patrol please provide that information here: \_\_\_\_\_

# North Central Region Welcomes Central Division Patrollers



## To Wausau, Wisconsin

September 6 - 8, 2013



Friday Night Fish Boil at Willow Springs



Concerts and Festival of Arts



Jefferson Street Inn



Kayak Events and Lessons



Much More!



Premium Micro Breweries

Bike Tours for All



# Central Division Fall Meeting Wausau, Wisconsin

September 6 - 8, 2013

Schedule of Events

On Line Registration Active July 1st

<http://cd-fallmeeting.eventbrite.com/#>



## Venue



**Jefferson Street Inn (JSI)** in downtown Wausau will be the main venue for meetings, events, banquet and lodging for the 2013 Central Division Fall meeting. A limited block of rooms is held at Jefferson Street Inn **until Aug 6th**, make reservations by calling the hotel direct at 715-845-6500. Advise hotel if shuttle is needed from airport. Please request National Ski Patrol room block when making reservations. Rooms are available starting at \$119 per night. Luxury Suites are available starting at \$149 (can sleep 3 - 6). Join up with fellow patrollers and share the cost of a Premier or Ultimate Suite for additional fee. **Event registration fee** is \$25.00 Early Bird (by August 1) \$35.00 (August 1st - September 2nd). No late registrations accepted. **Register for attendance using the On Line Registration form.**



**Courtyard by Marriott Wausau** will also hold a limited block of rooms. Make reservations by calling the hotel direct at 715-849-2124 Please request National Ski Patrol room block when making reservations. Rooms are available at \$99 per night. If you are staying at the Courtyard and need shuttle service from airport, call Les Robinson at 715-213-2918.

Shuttle service between the two hotels for events will be provided on a periodic basis. Watch for scheduled transportation notices in lobby.

## Friday Events



**Scramble Golf Outing** is planned for Friday from 12:30 PM to approximately 4:00 PM at Tribute Golf Course in Wausau. Fee is \$32 for a round of nine holes, includes cart, transportation to and from the course and all the fun you can imagine with spending an afternoon with patrollers. Transportation to the course will depart from the Courtyard at 10:45 AM and JSI at 11:00 AM. Lunch is available for purchase at the course. **Register in advance using the On Line Registration form.**



**Motorcycle Tour of the Northwoods** There will be several stops along the ride which will start around 10 AM. There is no fee for this event, but lunch is on your own. Enjoy the scenic beauty of Northern Wisconsin forests and farmlands. **Register in advance using the On Line Registration form.**



**Road Bike Wausau.** Join fellow patrollers for a road bike tour of the biking trails in the greater Wausau area. Tour will depart from Granite Peak \$12 **Register in advance using the On Line Registration form.**

**Orientation for New Staff** Noon - 5:00 PM. New RD's and Program Supervisors



**Authentic Wisconsin Fish Boil at Beautiful Willow Springs Gardens.** Enjoy a Wisconsin Great Lakes tradition with a fish boil at the one of a kind Willow Springs Gardens located north east of Wausau. Scheduled shuttle runs will transport you from Jefferson Street Inn starting at 5:15 PM to Willow Springs. Appetizers and beer / wine bar will open at 5:30, dinner will begin at 6:30 and shuttles will return you to Jefferson Street Inn starting at 8:00 PM. Willow Springs Gardens boasts restored historic area historic buildings, beautiful grounds and scenic views. The evening promises to be a delight for all attendees. Cost is \$ 25. **Register in advance using the On Line Registration form.**

## Saturday Events



**General Session.** 8:00 AM to Noon at Jefferson Street Inn. Updates from the Central Division and National Board Members as well as patroller specific topics will be covered.

**Central Division Board Meeting.** Noon to 5:00 PM at Jefferson Street Inn. All attendees are welcome to attend.

**Saturday Box Lunch Available.** \$ 15.00 **Order in advance using the On Line Registration form.**

**Kayak the Wisconsin River Saturday 8:00 AM - 11:00 AM** Divepoint Scuba and Adventure Center in Wausau will be our departure and landing site for wonderful kayak tours along the beautiful Wisconsin River. Enjoy views of nature and gain a unique perspective of downtown Wausau as you enjoy time on the water. Specialists will be on hand to answer questions, point you to the water you want and help you pick out proper equipment. \$22.00 Fee includes kayak. (\$12.00 without kayak) **Register in advance using the On Line Registration form.**



### Educational Opportunities:

Low Angle Rescue/Toboggan Refresher                      8:00 AM - 4:00 PM (lunch included)                      \$20.00  
 Jay Zedak, Daren Lukes (instructors). Meet at west end of Granite Peak ski area parking lot, then uphill 50 feet.

Certified Awareness Program @ Granite Peak    8:00 AM - 4:00 PM (lunch included)                      \$20.00  
 Join members of the Central Division Certified team to review objectives of units. Target audience is existing Certified Candidates and members considering the program. Meet at west end of Granite Peak ski area parking lot, then uphill 50 feet.

OEC Breakout Session    1:00 PM - 3:00 PM    Free

Making our Tracks Count: Women's Clinic    1:00 PM - 4:00 PM    Free  
 Linda Barthel, Women's National Program Director will lead discussion of women and women's programs in NSP

CPR Refresher for Health Care Providers (AHA) 1:00 PM - 5:00 PM    \$27.00

Avalanche Fundamentals and Rescue                      8:00 AM - 4:00 PM (lunch included)                      \$25.00  
 Dale Mihuta, Keith Robinson instructors. Will begin at Jefferson Street Inn and move to Granite Peak for outdoor portion.

**Register in advance using the On Line Registration form.**

### Central Division Awards Banquet:

Cocktail Hour    6:00 PM - 7:00 PM

Silent Auction    Ongoing

Dinner  
 (meal choices: walleye, flat iron steak, duck)                      7:00 PM - 8:30 PM    \$38.00

Keynote Speaker    8:30 PM

**Register in advance using the On Line Registration form.**



## Sunday Events

On Line Registration Active July 1st  
<http://cd-fallmeeting.eventbrite.com/#>



**Patrol Rep Breakfast.** 7:30 AM - 9:00 AM at Jefferson Street Inn. Join Division Director John Thomas for breakfast. Bring your questions and concerns to discuss with him and many other Central Division PR's. No cost to Central Division patrol reps or their designee. Be certain to let us know if you are attending so we can have accurate count. **Register in advance using the On Line Registration form.**

**Central Division Board Meeting.** 9:00 AM - Noon at Jefferson Street Inn.

## Other Events



**Premium Micro Breweries** Wisconsin's beer making tradition is alive and well in Wausau with the city boasting three premium craft breweries: Bull Falls, Great Dane and Red Eye.

Each brewery offers a wide range of selections and its own character and style. Plan to take time to visit one or all three. You will not be disappointed.

**Wausau Festival Of Arts** The Central Division meeting weekend corresponds to Wausau's famous Festival of Arts weekend with juried art exhibits and displays downtown, craft fair at Marathon Park and concerts on the 400 block adjacent to the Jefferson Street Inn. The world famous "Birds in Art" exhibit opens at Leigh Yawkey Art Museum. This free exhibition is one you will not forget.

There is a Festival-hosted shuttle in an historic trolley to transport you between venues.

The Downtown Farmer's Market will also be offering late summer and autumn products on Saturday.

**Nine Mile Forest** The off road bike trails of Nine Mile Forest offer some of the most exciting off road cycling opportunities in Central Wisconsin. Nine Mile's trails are only a few minutes from downtown Wausau. Bring your trail bike and enjoy!



## Logo Wear!



**2013 Central Division Meeting Logo Wear** Long sleeve embroidered logo wear. Men's and Women's specific tailoring. High quality, khaki. \$30.00 XS - XXL, additional fee for XXXL and larger. **Order in advance using the On Line Registration form.**

On Line Registration Active July 1st  
<http://cd-fallmeeting.eventbrite.com/#>

# Optional Hard Copy Registration

## Print, Complete and Mail



**September 6 -8, 2013**  
**Paper Registration Form**

**Patroller:** \_\_\_\_\_ **Position (if appl):** \_\_\_\_\_  
**NSP #:** \_\_\_\_\_ **Home Patrol:** \_\_\_\_\_  
**Address:** \_\_\_\_\_  
**City:** \_\_\_\_\_ **State:** \_\_\_\_\_ **Zip:** \_\_\_\_\_  
**Phone:** \_\_\_\_\_ **Cell:** \_\_\_\_\_ **E-mail:** \_\_\_\_\_  
**Spouse/Guest:** \_\_\_\_\_ (All registration confirmations will be sent by E-mail)

	Cost	Quantity	Total
<b>MEALS</b>			
<b>Friday Fish Boil</b> at Willow Springs (includes transportation)	\$25.00	<input type="text"/>	<input type="text"/>
<b>Saturday Lunch</b> Box Lunch from Jefferson Street Inn	\$15.00	<input type="text"/>	<input type="text"/>
<b>Saturday Awards Banquet</b> at Jefferson Street Inn (Dinner choices must be made in advance. Select one for each attendee.)			
Walleye	\$38.00	<input type="text"/>	<input type="text"/>
Flat Iron Steak	\$38.00	<input type="text"/>	<input type="text"/>
Duck	\$38.00	<input type="text"/>	<input type="text"/>
<b>ACTIVITIES AND CLOTHING</b>			
<b>Friday Scramble Golf</b> @ Tribute Club includes transportation and cart	\$32.00	<input type="text"/>	<input type="text"/>
<b>Friday Motorcycle Tour of Northwoods</b>	N/C	<input type="text"/>	<input type="text"/>
<b>Friday Road Bike Wausau</b> departs from Granite Peak	\$12.00	<input type="text"/>	<input type="text"/>
<b>Saturday Kayak</b> \$22 with rental, \$12 without	\$22/\$12	<input type="text"/>	<input type="text"/>
<b>Logo Meeting Shirt:</b> (Khaki color) Please indicate quantity ordered per size			
<b>Women's Sizes:</b>			
XS _____ SM _____ MD _____ LG _____ XL _____ 2X _____	\$30.00	<input type="text"/>	<input type="text"/>
3X _____ 4X _____	\$32.00	<input type="text"/>	<input type="text"/>
<b>Men's Sizes</b>			
SM _____ MD _____ LG _____ XL _____ 2X _____	\$30.00	<input type="text"/>	<input type="text"/>
3X _____ 4X _____	\$32.00	<input type="text"/>	<input type="text"/>
<b>PATROLLER EDUCATION OPPORTUNITIES</b>			
Low Angle Rescue/Toboggan Refresher (lunch included)	\$20.00	<input type="text"/>	<input type="text"/>
Certified Awareness Program (lunch included)	\$20.00	<input type="text"/>	<input type="text"/>
OEC Break Out Session	N/C	<input type="text"/>	<input type="text"/>
Making our Tracks Count: Women in the NSP	N/C	<input type="text"/>	<input type="text"/>
CPR Health Care Provider Refresher	\$27.00	<input type="text"/>	<input type="text"/>
Avalanche Fundamentals and Rescue (lunch included)	\$25.00	<input type="text"/>	<input type="text"/>
<b>Early Bird Registration fee</b>	\$25.00	<input type="text"/>	<input type="text"/>
(Received on or before August 1, 2013)			
<b>Standard Registration Fee</b>	\$35.00	<input type="text"/>	<input type="text"/>
(Received after August 1, 2013. No Exceptions. Reg. closes Sept 2nd)			
<b>TOTAL DUE:</b>			<input type="text"/>

Please make checks payable to:  
 NSP North Central Region

**Mail Your Registration and Check To:**  
 Central Division 2013 Meeting  
 c/o Kathleen Grant  
 6755 Frank Lloyd Wright Avenue  
 Middleton, WI 53562

**For more information:**  
 Contact: Kathleen Grant  
 Email: [Kgrant@borgelt.com](mailto:Kgrant@borgelt.com)  
 Phone: 608-228-7733  
 (I prefer email, thanks.)



# Thank You to Our Sponsors



Support  
and  
Recommend Our  
Sponsors

# Central Division Staff Roster

## 2012 - 2013 Administrative Staff



### INTERIM DIVISION DIRECTOR

**Brian Cobble**  
72 Deer Meadow Trail  
Valparaiso, IN 46385  
H) 219-462-2239  
W) 219-764-5252  
skicrud@comcast.net



### WEB MASTER

**Chris Raudabaugh**  
173 Tar Heel Drive  
Delaware, OH 43015  
H) 740-369-9634  
W) 740-368-5931  
chris@raudabaugh.net



### ELECTIONS/MEETINGS/MSAA

**Ken Meldahl**  
63 North Avenue  
Fox Lake, IL 60020  
H) 847-587-2397  
C) 847-204-0634  
kmeldahl@comcast.net



### LEGAL & RISK MNGMT

**Kevin McQuillan**  
916 Spindletree Avenue  
Naperville, IL 60565  
H) 630-357-6979  
W) 630-960-1242  
kmcquillanusa@hotmail.



### TREASURER

**Joe Hamel**  
961 County Road 480  
Marquette, MI 49855  
H) 906-249-9157  
C) 906-249-5614  
jrham122036@yahoo.com



### REGISTRATION

**Sherwin VanKlombenberg**  
995 Francis Dr  
Traverse City, MI 49696  
C) 231-881-8585  
svanklombenberg@gmail.com



### ADMIN. ASSISTANT

**Frank Cleary**  
22998 Cleary Lane  
Guilford, IN 47022-9691  
H) 812-487-2221  
C) 812-363-6357  
fcleary@hotmail.com



### MEDICAL

**Stephen Werner**  
PO Box 368  
Clarkston, MI 48347  
H) 248-625-2730  
C) 248-408-4313  
steve.werner@usa.net



### ALUMNI

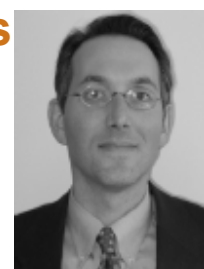
**Carrington Beach Day**  
5820 Lodgepole Rd  
Harbor Springs, MI  
49740  
H) 231-526-6496  
C) 231-881-1920  
cbday@chartermi.net



### RUSTY PARKA NEWS

**Tim Zimmerman**  
7472 Stonefield Trail  
Schofield, WI 54476  
C) 715-218-3328  
W) 715-536-7176  
tzimmerman@  
mitchellmetalproducts.com

## Region Directors



### EMI REGION DIRECTOR

**Derek Werner**  
PO Box 393  
Clarkston, MI 48387  
H) 248-342-1970  
C) 248-342-1970  
derek.werner@usa.net

### TELECOMMUNICATIONS

**Steve Beil**  
PO Box 396  
Woodruff, WI 54468  
H) 715-588-3833  
W) 715-842-0841  
nspsteveb@gmail.com

## Region Directors Continued



### NC REGION DIRECTOR

**Les Robinson**  
751 Blue Ridge Lane  
Nekoosa, WI 54457  
H) 715-325-3025  
llrobins@wctc.net



### OH REGION DIRECTOR

**Bill Currier**  
190 Ballantrae Drive  
Sagamore Hills, OH 44067  
H) 330-467-6787  
C) 630-815-6077  
curriewd@gmail.com



### W MI REGION DIRECTOR

**David Johnson**  
15490 Peach Ridge Ave  
Kent City, MI 49330  
H) 616-675-4998  
C) 616-477-3831  
jtwins@att.net



### N MI REGION DIRECTOR

**Richard Jacques**

H) 248-398-3379  
rjacques@dso.org



### S REGION DIRECTOR

**Don Steen**  
519 Meadowview Dr.  
Clinton, la 52732  
H) 563-243-3950  
C) 563-249-5735  
donjosteen@yahoo.com



### W REGION DIRECTOR

**John 'JT' Thomas**  
72212 300th Ave  
Lake City, MN 55041  
H) 651-345-5160  
W) 507-253-5885  
jttheskibum@gmail.com



### SC REGION DIRECTOR

**Joe Riley**  
823 Chalfont Drive  
Sun Prairie, WI 53590  
H) 608-825-9956  
C) 608-220-5086  
jjriley76@earthlink.net



### ADD

**Brian Cobble**  
72 Deer Meadow Trail  
Valparaiso, IN 46385  
H) 219-462-2239  
W) 219-764-5252  
skicrud@comcast.net



### PUBLIC RELEATIONS

**Ty Damon**  
4222 Maybee Rd  
Lake Orion, MI 48359  
H) 248-393-3203  
W) 313-596-9101  
C) 248-318-4848  
tdamon@me.com  
tdamon@jackmorton.com



### SKI SCHOOL DIR.

**Dan Moss**  
5576 Davison Dr  
Hilliard, OH 43026-8456  
W) 614-578-9002  
dan@mossremodeling.com



**PSIA LIAISON**

**Tom Anderson**

112 Pineview Drive  
Marquette, MI 49855  
H) 906-228-6126  
W) 906-475-7640  
tpanderson@charter.net



**TOBOGGAN**

**Tom Worley**

7231 Overland Ct. Park  
West Chester, OH 45069  
H) 513-860-4411  
C) 513-304-7021  
tom.worley@zoomtown.com



**ADD**

**Tom Anderson**

112 Pineview Drive  
Marquette, MI 49855  
H) 906-228-6126  
W) 906-475-7640  
tpanderson@charter.net



**AVALANCHE**

**AWARDS**

**Gregg Reese**

11308 Stonybrook Dr.  
Grand Blanc, MI 48439  
H) 810-695-6737  
W) 810-743-7070  
reese-nspp@comcast.net



**MTN TRAVEL & RESCUE**

**John Wachter**

12107 Duane's Dr  
Galena, IL  
H) 815-986-8259  
rock\_ski@hotmail.com



**NORDIC ADVISOR**

**Peter Wollan**

1701 10th St NE  
Rochester, MN 55906  
H) 507-281-9769  
peter.wollan@gmail.com



**OEC**

**Karen Hadden**

15805 Kane Rd  
Plainwell, MI 49080  
H) 269-664-4753  
W) 269-341-8336  
karenhadden21@gmail.com



**OEC**

**Kathy Glynn**

728 Castleton Court  
Eagan, MN 55123  
H) 651-688-0168  
angelw499@aol.com



**ADD**

**Linda Murphy Jacobs**

PO Box 242  
Omena, MI 49674  
H 231-386-9080  
C 231-632-4289  
Omenalodge@gmail.com

**AUXILIARY**

**Open**



**INSTRUCTOR DEVL P**

**Virginia Rodeman**  
1817 Potomac Dr.  
Toledo, OH 43067  
H) 419-536-1179  
W) 419-531-1618  
rodewoman@yahoo.com

**WOMEN'S SEMINAR**

**Sandi Hammons**  
5517 Regal Ridge Drive  
Burlington, KY 41005  
(h)(859) 586-8090  
(c)(859)466-8496  
hammons@insightbb.com

**SKILLS DEVELOPMENT**

**Don Loerch**  
889 Central Drive  
Lake Orion, MI 48362  
C) 248-778-7658  
dloerch@sbcglobal.net

**CERTIFIED**

**Mike Longfellow Jones**  
5442 Red Fox  
Brighton, MI 48114  
H) 810-229-1662  
W) 313-248-6151  
longfellow\_jones@sbcglobal.



**P101 (Intro To Patrolling)**

**Jeannine Mogan**  
5755 132nd St W  
Savage, MN 55378  
C) 612-710-2186  
jmogan@threeriverspark-  
district.org

**SENIOR**

**Jay Zedak**  
108 Grandview Drive  
Hudson, OH 44236  
W) 330-650-2858  
C) 330-958-5800  
jay@bugbusterinc.com

# CENTRAL DIVISION STAFF ROSTER



The official newspaper for the  
National Ski Patrol®, Inc.  
Central Division  
The *Rusty Parka News* is published three times  
annually.

**2013 NATIONAL SKI PATROL®, INC. CENTRAL DIVISION**

All rights reserved. The words "Ski Patrol" and "National Ski Patrol" are  
trademarks registered in the U.S. Patent Office

**Division Director**

Brian Cobble  
72 Deer Meadow Trail  
Valparaiso, IN 46385  
219-462-2239

**Editor**

Tim Zimmerman  
7472 Stonefield Trail  
Schofield, WI 54476  
715-298-9070

**EDITORIAL STATEMENT**

The appearance of advertising material in the *Rusty Parka* does not imply that the National Ski Patrol endorses any product, service or company unless specifically stated. Statements or opinions expressed in the *Rusty Parka* reflect the views of the author(s) and are not necessarily the views of the National Ski Patrol, its officers, staff, board of directors or members. The *Rusty Parka* will assume no loss or liability for loss or damage to any material submitted for publication including manuscripts, photographs, or art work. All contributions and submissions are subject to revision or editing at the sole discretion of the Editor. The act of mailing, submitting or transmitting materials to the *Rusty Parka* shall constitute an express warranty by the author or contributor that the material is original and in no way an infringement upon the rights of others.

## Letters to the Editor

Letters to the Editor must be submitted electronically to [tzimmerman@mitchellmetalproducts.com](mailto:tzimmerman@mitchellmetalproducts.com). The RPN reserves the right to publish and withhold letters based on content and length. Letters in excess of 250 words may be edited due to space limitations.

## ADDRESS CHANGES

Changes to address should be updated on the NSP National Web Site. Please log on to [www.nsp.org](http://www.nsp.org) and access your NSP Member Page to update your personal information. The *Rusty Parka* e-mail list is downloaded from the National database. All address changes and corrections must be made on the National site.

# CENTRAL DIVISION CALENDAR

Start Date	End Date	Program Type	Region	Location	Description	Contact
2013-06-22	2013-06-22	OTHER EVENTS	North Central	Marquette Mountain	Marquette Mountain Mud	Kristy Gollakner kgollakner@gmail.com
2013-06-30	2013-06-30	DEADLINES	North Central		End of Fiscal Year	sg.hull@frontier.com 715-432-7879
2013-07-01	2013-07-01	DEADLINES	North Central		Completion of patrol reports	sg.hull@frontier.com 715-432-7879
2013-07-06	2013-07-06	OTHER EVENTS	North Central	Minocqua Winter Park	Muggy Buggy Race 5K race and extreme race	Betty Adams mbadams008@gmail.com 715-588-7731
2013-07-13	2013-07-13	OEC	Ohio	PNS	OEC Class Starts	Sandi Hammons
2013-07-20	2013-08-02	DEADLINES	North Central		Review of patrol reports by section chiefs	sg.hull@frontier.com 715-432-7879
2013-08-03	2013-08-16	DEADLINES	North Central		Consolidation of reports into section report	sg.hull@frontier.com 715-432-7879
2013-08-04	2013-08-07	Other Events	Ohio	Central Div. Rep."	MSSA Annual Meeting	"Ken Meldahl
2013-08-10	2013-08-10	OEC	North Central	Granite Peak	Tentative start date OEC course	
2013-08-18	2013-08-23	DEADLINES	North Central		Review of consolidated report by section chief	sg.hull@frontier.com 715-432-7879
2013-08-22	2013-08-22	OEC	Ohio	Grant Line School	Paoli OEC Class Starts	Dave McKinley
2013-08-24	2013-08-24	REFRESHERS	North Central	Ski Brule - Iron River	OEC Refresher	Mike Krein
2013-09-01	2013-09-01	DEADLINES	North Central		Region report due to division	sg.hull@frontier.com 715-432-7879
2013-09-06	2013-09-08	MEETING	North Central	Wausau, WI	Central Division	Les Robinson lrobin@wctc.net
2013-09-06	2013-09-08	Meetings	Ohio	"Wausau	Central Div. Fall Meeting & Awards Banquet	Les Robinson
2013-09-09	2013-09-09	OEC	North Central	Marquette Mountain	Tentative start date OEC course	Lolita Barry 906-486-8152
2013-09-14	2013-09-14	REFRESHERS	North Central	Indianhead	OEC Refresher	lbarry@chartermi.net
2013-09-14	2013-09-14	REFRESHERS	North Central	Marquette Mountain	OEC Refresher	Walt Hess threetrack@chartermi.net
2013-09-22	2013-09-22	Refeshers	Ohio	Mad River Mountain	OEC Refresher	Lolita Barry 906-486-8152
2013-09-22	2013-09-22	MEETING	Ohio	Liberty Township Fire Hall	Region Fall Meeting (date to be confirmed)	lbarry@chartermi.net
2013-09-22	2013-09-22	Meetings	Ohio	Liberty Township Firehall	OEC Refresher	Troy Green
2013-09-28	2013-09-28	Refeshers	Ohio	Snow Trails	Ohio Region Fall Meeting	Bill Currier (curriewd@gmail.com)
2013-09-28	2013-09-28	Refeshers	Ohio	Brandywine	OEC Instructor Refresher	Bill Currier
2013-09-29	2013-09-29	Refeshers	Ohio	PNS	OEC Refresher	Sue Cline
2013-10-06	2013-10-06	Refeshers	Ohio	Snow Trails	OEC Refresher	Janet Glaser
2013-10-06	2013-10-06	Refeshers	Ohio	Brandywine	OEC Instructor Refresher	Sandi Hammons/Dan Pflum
2013-10-06	2013-10-06	Refeshers	Ohio	PNS	OEC Refresher	Sue Cline
2013-10-06	2013-10-06	Refeshers	Ohio	Mad River Mountain	OEC Refresher	Janet Glaser
2013-10-06	2013-10-06	Refeshers	Ohio	Mad River Mountain	OEC Refresher	Sandi Hammons/Dan Pflum
2013-10-06	2013-10-06	Refeshers	Ohio	Mad River Mountain	On the Hill Refresher	Troy Green
2013-10-12	2013-10-12	REFRESHERS	North Central	Wausau, WI	OEC Refresher Section 4	Doug Borre wtd@solarus.net 715-570-2959
2013-10-12	2013-10-12	REFRESHERS	North Central	Gogebic Community College	Porkies , Blackjack, Powder Horn, Ashwabay OEC	Roger Bennetts
2013-10-12	2013-10-12	Refeshers	Ohio	Paoli Peaks	Refresher	Rick Jackson
2013-10-13	2013-10-13	REFRESHERS	North Central	Granite Peak	OEC Refresher	Joe Conrad joe45conrad@yahoo.com 715-370-7909
2013-10-15	2013-10-15	DEADLINES	North Central		Patrol Meeting/Chair Evac	Tim Zimmerman
2013-10-18	2013-10-20	Other Events	Ohio	BMBW	Powder Lines Deadline Fall Issue	tzimmerman@mitchellmetalproducts.com
2013-10-19	2013-10-19	REFRESHERS	North Central	Pine Mountain	Ski Swap	Kieth Brown
2013-10-26	2013-10-26	MEETING	North Central	Brule	Section 3 OEC Refresher	Garth Beauchamp
2013-10-26	2013-10-26	SENIOR	North Central	Brule	Fall NC Region Board Meeting	Les Robinson lrobin@wctc.net
2013-11-02	2013-11-02	OTHER EVENTS	North Central	Minocqua Winter Park	Mandatory Senior OEC	Mike Olson molson6094@aol.com
2013-11-02	2013-11-03	Other Events	Ohio	PNS	Qualification Clinic	Betty Adams mbadams008@gmail.com 715-588-7731
2013-11-03	2013-11-03	REFRESHERS	North Central	Minocqua Winter Park	Buck Rut Race 5K race	Sandi Hammons
2013-11-03	2013-11-03	REFRESHERS	North Central	Minocqua Winter Park	Ski Swap	Betty Adams mbadams008@gmail.com 715-588-7731
2013-11-03	2013-11-03	REFRESHERS	North Central	Minocqua Winter Park	Open to all; PLEASE call or email in advance	Betty Adams mbadams008@gmail.com 715-588-7731
2013-11-09	2013-11-09	TESTING/TRAINING	North Central	Granite Peak	Candidate OEC Evaluation	Doug Borre wtd@solarus.net 715-570-2959
2013-11-18	2013-11-22	Refeshers	Ohio	Boston Mills	Chair Evac Refreshers - Opening Week	Jim Burns
2013-11-20	2013-11-20	Testing/Training	Ohio	Colorado	Ski Immersion Training	Jay Zedak
2013-11-23	2013-11-24	TESTING/TRAINING	North Central	Ski Brule - Iron River	Ski Enhancement Seminaar	Bob Salonen
2013-12-07	2013-12-08	REFRESHERS	North Central	Ski Brule - Iron River	Ski & Toboggan Refresher	Peter Holdridge
2013-12-14	2013-12-15	TESTING/TRAINING	North Central	Wild Mountain	Division STW	peterholdridge@airnetisp.com
2013-12-14	2014-03-02	TESTING/TRAINING	North Central	Ski Brule - Iron River	Patroller 101 - S&T Training	Les Robinson lrobin@wctc.net
2013-12-14	2013-12-15	REFRESHERS	North Central	Ski Brule - Iron River	Ski & Toboggan Refresher	Lee Ann Heim/Peter Holdridge
2013-12-14	2013-12-15	TESTING/TRAINING	North Central	Boyne Highlands	Division STW	Peter Holdridge
2013-12-21	2013-12-22	TESTING/TRAINING	North Central	Cascade	Division STW	peterholdridge@airnetisp.com
2014-01-11	2014-01-11	REFRESHERS	North Central	Granite Peak	S&T Refresher	Les Robinson lrobin@wctc.net
2014-01-11	2014-01-12	AVALANCHE	North Central	Minocqua Winter Park	Nordic SES, Sat Evaluations,	Chuck Jonas ozzykat@charter.net
2014-01-12	2014-01-12	REFRESHERS	North Central	Granite Peak	Sun Trail Clinic	Peter Wollan peter.wollan@gmail.com
2014-01-13	2014-01-13	NORDIC	North Central	Indianhead	S&T Refresher	Chuck Jonas ozzykat@charter.net
2014-01-15	2014-01-15	DEADLINES	North Central		Telemark Clinic with Dan Clausen	Peter Wollan peter.wollan@gmail.com
2014-01-18	2014-01-18	TESTING/TRAINING	North Central	Brule	Powder Lines Deadline Winter Issue	Tim Zimmerman
2014-01-18	2014-01-20	OTHER EVENTS	North Central		Region STW	tzimmerman@mitchellmetalproducts.com
2014-01-19	2014-01-19	TESTING/TRAINING	North Central	Brule	MLK Weekend	
2014-01-25	2014-01-25	CERTIFIED	North Central	Marquette Mountain	Region Mandatory Senior OEC Clinic	Mike Olson molson6094@aol.com
2014-01-25	2014-01-25	CERTIFIED	North Central	Marquette Mountain	Certified Refresher, Clinic and Qualification	Tom Anderson

# CENTRAL DIVISION CALENDAR

2014-02-01	2014-02-01	OTHER EVENTS	North Central	Minocqua Winter Park	Wolf Tracks Rendezvous	Betty Adams mbadams008@gmail.com 715-588-7731
2014-02-08	2014-02-09	AVALANCHE	North Central	Mount Bohemia	Nordic Ski Marathon	Keith Robinson krobins@live.com
2014-02-15	2014-02-17	OTHER EVENTS	North Central		Presidents Weekend	
2014-02-20	2014-02-23	NORDIC	North Central	Hayward, WI	American Birkebeiner	
2014-02-22	2014-02-22	SENIOR	North Central	Big Powder Horn	Senior S&T Eval	Keith Robinson krobins@live.com
2014-02-23	2014-02-23	DEADLINES	North Central		Awards Deadlines	Brenda Robinson brobins@live.com
2014-02-27	2014-03-02	CERTIFIED	North Central	Marquette Mountain	Certified Evaluation	
2014-03-01	2014-03-01	OTHER EVENTS	North Central	Minocqua Winter Park	Squirrel Hill Pursuit Nordic Ski Race	Betty Adams mbadams008@gmail.com 715-588-7731
2014-03-02	2014-03-02	TESTING/TRAINING	North Central	Ski Brule - Iron River	Candidate S&T Evaluation	Peter Holdridge peterholdridge@airnetisp.com
2014-03-09	2014-03-09	AWARDS	North Central	T/B/D	Awards Meeting	Brenda Robinson brobins@live.com
2014-03-15	2014-03-15	SENIOR	North Central	T/B/D	Senior OEC Eval	Mike Olson molson6094@aol.com
2014-03-24	2014-03-24	Instructor Development	Ohio	BMBW	ID 1st Class	Janet Glaeser
2014-03-26	2014-03-26	Instructor Development	Ohio	BMBW	ID 2nd Class	Janet Glaeser
2014-04-04	2014-04-06	MEETING	North Central	Chicago	Central Division Spring Board Meeting	
2014-04-25	2014-04-27	MEETING	North Central	Minocqua	North Central Region Spring Board Meeting	Les Robinson lrobins@wctc.net

**CENTRAL DIVISION CALENDAR**  
**Information Displayed in the RPN**  
**is Current as of Date of Publication.**  
**Please Check Official Calendar at**  
**[www.nspcentral.org](http://www.nspcentral.org)**  
**for Latest Updates.**

**Dates, Times and Events Subject to Change**

## MTR Photos from 2013

